

Coal & Allied – Mount Thorley Warkworth Operations
Community Consultative Committee Meeting – Monday 22 May 2017

Attendance

Chairperson

Colin Gellatly Independent Chair MTW CCC

Company Representatives

Colin Mackey General Manager – MTW
 Andrew Speechly Manager Environment & Community (HVO/MTW)
 Travis Bates Specialist Community Relations

Community Representatives

Stewart Mitchell Community Representative
 Christina Metlikovec Community Representative
 Graeme O'Brien Community Representative
 Adrian Gallagher Community Representative

Council

Cr. Hollee Jenkins Singleton Council Representative

Observers / Presenters

Robert Gothard Environmental Advisor – MTW / CCC Secretary
 James Nixon Environmental Advisor

Apologies

Ian Hedley Community Representative

Minutes

Sarah Purser

1. **Welcome;** Col welcomed the group and introduced Colin Mackey as MTW's new General Manager, along with Jimmy Nixon who will be taking over the running of the CCC from Rob as he transitions into a new role.
2. **Apologies;** Advised and recorded.
3. **Declaration of Pecuniary Interests / Conflict of Interest;** Ongoing; Col advised that both he and Sarah are engaged by Coal & Allied to provide the services of Independent Chairperson and meeting note taker.
4. **Correspondence:-**
 - 17 February 2017; From Andrew advising Colin Mackey's appointment as General Manager.
 - 4 May 2017; From Travis regarding the MTW VPA
 - 4 May 2017; From Col regarding MTW Compliance Audit; *No member feedback received.*
5. **Matters arising from the previous Meeting (Actions)**

Action 1: MTW to provide some examples of past blasts; from planning stages to detonation, and provide detail on what the Blast Fume Model had predicted along with other data that had also been taken into consideration at the time by the decision makers.

✓ *At today's Meeting*

Action 2: Andrew to liaise with Adrian on details of the property that is not in the acquisition zone but is located in between two properties that are in the acquisition zone.

✓ **Actioned:** Andrew and Adrian confirmed they had met prior to today's Meeting.

Action 3: MTW to keep the CCC posted on the commencement of works on the Putty Road Underpass.

✓ **Actioned:** At this Meeting and in Near Neighbour Letters

Action 4: MTW to provide further detail on the community notification system being developed for HVO with the view that it may be possible to adopt this at MTW for Blasting Road Closure notifications.

This system is still in development and it was anticipated that HVO would roll it out by the end of July.

ACTION 1 : MTW (Andrew) to update members on progress with the HVO Blast Notification System (Text message updates).

Action 5 / Ongoing: MTW to keep the CCC up to date in matters pertaining to C&A's application to Singleton Council to close Wallaby Scrub Road, either at a meeting, or out of session should there be any update outside of two weeks prior to the next CCC Meeting.

Ongoing; MTW are providing regular updates via their Near Neighbour Letters.

Action 6: Meeting Minutes to be re-distributed to members after the comments period close as "Endorsed by Chair - Pending Confirmation". The current process of ratifying them at the subsequent meeting is to remain in place.

- ✓ **Actioned:** The MTW CCC Meeting Minutes - Monday 13 February 2017 were re-distributed after the comments period close.

Action 7: MTW to provide some instructions to community to locate the CCC Meeting Minutes on C&A's website.

- ✓ **Actioned;** In March Near Neighbour Letter

Action 8: MTW to provide a report back to the CCC to determine how many residents of Singleton and within the 2330 postcode, are directly employed at MTW, along with the major sub-contractors i.e. Skilled and TESA, mainly in relation to operational staffing.

- ✓ *At today's Meeting*

Ongoing Action: MTW to provide a summary of the main conclusions from the Inter-Agency Audit Program on Dam Safety to the CCC.

- ✓ *At today's Meeting*

Confirmation of the previous Meeting's Minutes

Col called for any feedback on the Minutes for the Meeting 13 February 2017 and asked that they be ratified. No comments were put forward by the CCC and the Minutes were taken as read.

6. Company Reports – Colin Mackey, General Manager

Colin thanked the CCC for accommodating the early engagement with him prior to today's meeting at relatively short notice and for this Meeting to be re-scheduled to accommodate his prior commitments.

6.1. Overview of activities

Putty Road Underpass

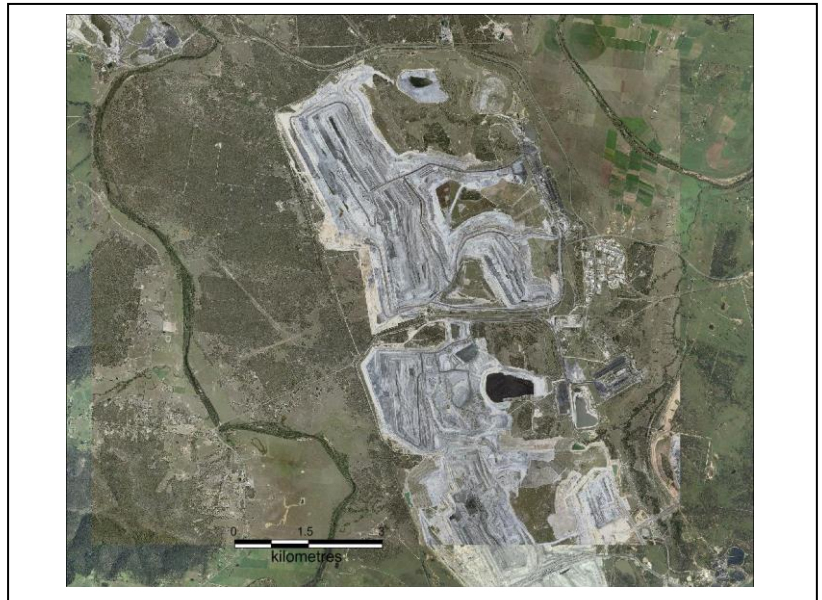
- ✚ Works for this third crossing had originally been anticipated to commence in January 2017.
- ✚ There had been a delay due to the Department of Main Roads working through the design approvals. There had been no issues associated with the design but rather the required resources to get through that process.
- ✚ The Department of Main Roads had given immediate approval for works at the side of the road, then 3 to 4 weeks ago gave MTW full approval to move across the road.
- ✚ Work has now been started in full and slightly ahead of schedule in the piling on either side of the road.
- ✚ Progress had been impacted by heavy rainfall in February.
- ✚ The underpass is now anticipated for completion in February/March of 2018 i.e. works left site.

Tailings Dam 2 Capping

- Picture taken in December 2016.
- The Dam outline can be seen, along with a bit of water in the centre and that this dips into the middle.
- The reason that MTW cannot just pump this out and fill it is due to there being tailings on top and also some fly ash from a Power Station.

Tailings Dam 1

- Approval has been received to dump over the top of this Dam and fill it with materials to make sure it does not liquefy underneath.
- As soon as the base is in MTW will be able to run up and down with bigger gear.
- MTW identified on the picture where this dam had been filled in around the sides.
- MTW will keep monitoring and pumping water off and push the overburden towards the centre.
- Completion of filling in this Dam is estimated for year end, then another layer will be put over the top to get a more natural landform with rehabilitation anticipated for next year.



Wallaby Scrub Road

Colin provided the following update to members;

Wallaby Scrub Road Closure went out for Public Display & Submissions

- A number of submissions were received from a large number and variety of people.
- Anecdotally there was just short of 2,000 submissions and these were a combination of for and against.
- Submissions were also from a mix of people within and external to the LGA.

Colin explained there had been two reasons for Council not going back in May to make a decision on Wallaby Scrub Road;

1. Review of Submissions

There was a huge volume of submissions to go through and categorise accordingly between those relevant to the road closure and those only talking about mining, which was not what the decision was about - it was about closing the road.

2. Aboriginal Land Rights Claim under the Aboriginal Land Rights Act

This Claim over Wallaby Scrub Road was lodged just prior to the last Council meeting. Colin advised that Wallaby Scrub Road is a Council Road, not Crown Land and clearly an active road. In addition, this road has a Development Consent and Mining Lease over the top of it. Therefore, that Claim was not valid but did add a complication for Council to work through and created the need to talk to relevant Government Departments before being able to come back.

Colin confirmed that the Wallaby Scrub Road closure has now been through the submission period and is currently being reviewed by Council. Stewart queried how long it was anticipated for this matter to come back before Council and Colin advised this would not be in June and that Council's General Manager; Jason Linnane had seemed reasonably confident that it would be in the next few months with a date yet to be set.

VPA

Colin explained when the VPA went out for submissions it did not have an appropriate "Explanatory Note" over the top of it which is a requirement of Legislation. Therefore this had been put back out again with submissions finishing in the next week or so, at which time it was felt it may go to the June Council Meeting for approval.

Graeme felt that historically there had been some errors in one of the Environmental Impact Statements about Wallaby Scrub Road, that being it was noted as a supposedly minor road with a speed limit of 80 kilometres per hour. Graeme felt that was therefore incorrect and this anomaly had been in the responses from some of the land holders in the Bulga area who were in conflict as to what the EIS had said.

Colin asked if Graeme would like him to take that question on notice and Graeme responded that was not necessary, he was just bringing this up as a historical matter and wanted it brought to Colin's attention. Colin noted that Council is very rigorous in looking into all the various aspects relating to the closing of Wallaby Scrub Road.

Property Acquisitions

Colin explained that these acquisitions linked back to Wallaby Scrub Road with Council moving forward the process of closing this road in February of this year. MTW already had a Mining Application over the top of Wallaby Scrub Road and received the Development Mining Lease about a month ago, as such, this triggered the final clause in many of the re-instated Zone of Acquisition purchases. Colin confirmed that a handful of landowners have completed those purchases over the last six weeks since MTW had received the Mining Lease, which had been good for those that were interested.

Yancoal

It was confirmed that papers were signed in January and that there was still a lot of work to be done in understanding site and what Yancoal needs to take on board and what Rio is to give up that goes with the site.

Over the last few months workshops had been held and there was now a better understanding on this and as such, the company was in quite a good position moving forward in building a transition plan both for Rio Tinto to exit and for Yancoal to move forward, with QTR 3 anticipated for completion.

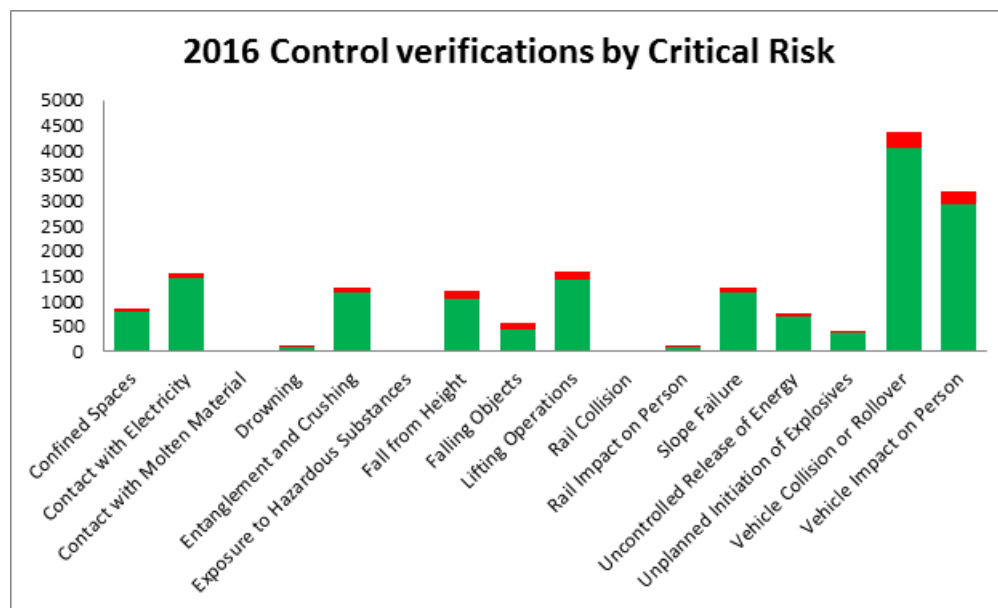
Safety Snapshot

AIFR YTD 2017 = 0.63 / LTIFR YTD 2017 = 0.21

In the 135 year history of Rio Tinto, there had not been one fatality free year. Colin explained that to reduce potential for fatalities Rio Tinto had implemented Critical Risk Management, which is not dissimilar to "Golden Rules". A review was conducted on where in the Industry people had been killed i.e. working at height, driving vehicles etc and within those - what controls are imperative to have in place to prevent fatalities.

A "Check List" was then created for Operators and Maintainers, to ensure they have those controls in place and if they haven't, to empower them to say no to doing a job. Supervisors and Superintendents have a large number of verifications to go out and check those Critical Controls are appropriate and then implement them for the job.

Critical Risks on Site can be seen in the table below with the main ones being around vehicles and driving. Last year MTW conducted 50,000 verifications across site, which is a significant amount. Colin explained this is about putting priority into indentifying Control for Critical Risks and that Yancoal recognise the value of this system, as does the workforce, and will be taking this with C&A as the transaction completes.



Injuries; Colin advised there had been three injuries this year and provided an overview of what actions had been undertaken in response.

First Aid Training

Andrew noted that there had been an offer in C&A's March Near Neighbour Letter for residents to take up First Aid Training offered to employees and their families. Travis advised that he had received around 4 or 5 enquiries on this and the company encouraged the CCC to spread the word about this offer and to let Travis know of anyone interested.

Blasting Overview : Action 1 from 13 February 17 Meeting

29 large blasts since last meeting:-

- ✚ 23 followed EnvMet Predictions.
- ✚ 6 that did not were allowed to go ahead as the wind was more favourable than the actual prediction.
- ✚ All blasts must be fired in accordance to the Blasting Permissions page as well as on-the-ground verifications from the blasting and road closure crews.
- ✚ The main purpose for EnvMet is for the forward planning of blasts.

Andrew advised that providing this blasting review had been in response to Graeme's question on how does MTW know if the MET forecasting tool is accurate and a request for examples of where this forecast was different to the actual wind direction on the day.

As a response Andrew had picked up all substantial blasts since the last meeting and advised the upshot was this review indicated 80% accuracy of the model, which is quite good for a meteorological model and at least representative. For the blasts where conditions weren't as predicted, these came down to the daily controls, looking at actual data at the time and that was how they were managed. In these cases the wind conditions were more favourable than the prediction. Andrew felt there was good indication, based on the meteorological model, that the results are about as good as one could expect to get. Graeme understood that the MET Bureau indicated if they can get it right about 70% of the time, then that is good.

Colin reiterated 80% of the predictions were spot on and added that if on the day the wind, humidity, temperature etc did not match what was predicted but there was more favourable wind direction and therefore safer, MTW would fire the shot. If it was less safe, say windier or the wind was going in a different direction e.g. East instead of South, then MTW would not fire that shot and make that revised call on the risk at the time of the Risk Assessment.

Review of Blast in West Pit - 27/04/2017 (Thursday)

Planning & Preparation

- This blast had been delayed partly due to the Easter break with Monday being a Public Holiday where MTW is not allowed to blast, followed by days of wind conditions that were not favourable at all.
- The decision was made to fire the shot on the Thursday. MTW had expected the wind to comply and on the day of the shot the wind was blowing lightly in a northerly direction and on that basis made the call to fire it.
- This meant that the product had slept for extra days.
- Water resistant product had been used in the hole.
- Based on the Risk Assessment MTW (1) put a bigger exclusion zone on the road and around the area and (2) the wind direction had to be favourable.

Day of the Blast

Colin advised that when the shot was fired there had not been the greatest outcome however the blast was as MTW had anticipated for the day and that it did not leave site but slowly dissipated up and over the road and down the side, all within MTW's Lease. Whilst the result of the blast was not what the company had wanted, it had been the best way MTW could control it and keep it on site. MTW tested for gas all along there to ensure there was nothing noxious prior to re-opening the road.

Nature of Blast

- The area of the shot had 22 rows and was quite wide at the bottom.
- When you have a shot which is confined, when it fires it does not fluff up, as much as not as much oxygen can get in there, so a slightly lower oxygen burn which results in increased fume. As an example; a second bigger shot had been fired next door to this which was a lot fluffier and not so constrained, therefore had a much better result as far as gas goes.

Colin provided an overview on the chemical mixes utilised that result in a more water resistant product and explained that higher mix ratios will result in a product that will stand up to quite a bit of water. In addition, he described what products are utilised for dry holes to get the best quality of shot i.e. the best release of energy into the rocks.

Stewart asked in reference to that blast if the company was rather concerned about the results simply because there had been a four road closure around the whole perimeter of the blast and he noted that Bulga Coal had also been notified that MTW were going to blast. Stewart thought that normally if the wind velocity was not excessive that should not be a problem for Bulga Coal. Stewart asked if this blast had been reported to the Department and the EPA and if there had been any penalties applied.

Colin explained that blasting notifications typically include most adjacent mines as the norm and it was standard practice to inform Bulga Coal. Colin advised this was not so much about any potential risk there but more about where Bulga Coal's land is located and their access roads. Bulga Coal were notified as they are an adjacent mine and it was not inconsistent to notify other mines, usually in circular emails on a regular basis.

Stewart asked if MTW had been concerned about the blast and Colin responded that as the shot had slept for a long time the company had felt there was a chance of fume and that is why they extended the boundaries out which is not unusual. If a blast is anticipated to be worse than normal then the company will look at the risk and put in precautions by minimising those within the boundaries that they have.

It was expected that there would be some orange but not as much as there was and that is why the company proactively reported this to the Department. There were no penalties associated as the blast was contained within site. In addition the EPA had looked at the shot and what had happened and were satisfied with the precautions undertaken by MTW. Colin explained the preference is to be proactive and minimise exposure to people and therefore it was more favourable to cause a bit of inconvenience with people having to wait a bit longer for a road re-opening rather than expose people when you should not have to.

Stewart queried if fume production is associated with delayed shots. Colin advised that generally speaking it can be, as the longer it is left the more potential there is for water to get in there and then it is less likely to achieve complete combustion and to end up with nitrous fumes. Similarly, in a confined shot there may be less oxygen, so in this case there was a combination of leaving it in the ground and being a confined shot. Colin noted that having a plume as a result of a blast does not look good but not having control where it goes is not the right thing to do, therefore the company had to pick the best time to detonate to keep it within site, make sure no one got too close, and manage it that way.

2017 Rehabilitation

Rehabilitation target for 2017 = 122 ha

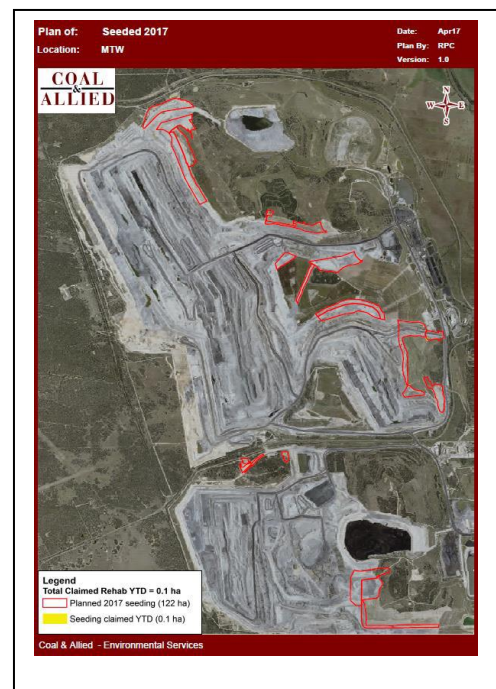
For map referencing - rehabilitation is outlined in red

Works completed 2017:

- ✓ 59.1 ha bulk shaped
- ✓ 33.4 ha topsoiled 31.6 ha composted
- ✓ Planning to seed 20ha in May

Currently targeting the South Pit area

- ✓ Shaping South Pit South
- ✓ Filling and shaping the Training Ground Rd
- ✓ Seeding South Pit as well as the Bulga Area



Stewart queried the patch that he identified as the "red tick" shape. Andrew advised that there is a water improvement program there, with a series of water management activities being conducted to try and reduce the amount of exposed areas by rehabbing a small amount of disturbed land.

Woodlands Off-Set

Andrew advised there was a presentation on the Woodlands off-set at the last meeting where Bill had come to talk about what was being planned for this year's off-sets program. Andrew updated the CCC on how this program has now kicked off with sand having been transported across to Archerfield for a subsequent round of planting and there was also some planting planned across the road in the Springwood property, which is west of Wallaby Scrub Road.

Operational Downtime

Noise compared to 2016 was lower:-

2017 = 2188.03 hours

2016 = 1866.09 hours

Noise

	# CRO Assessments	# Above trigger	# Nights above trigger
YTD 2017	1506	4	2
YTD 2016	1485	44	15

MTW had undertaken more Community Response Officer noise assessments than the same time last year but only 4 of those triggered the noise levels that accompany the Trigger Action Response Plan for the site, compared to 44 in 2016.

Dust; Boom spray trial on Dragline

Andrew advised that there had been an increase in downtime due to dust, primarily related to the Dragline operating at the end of West Pit which is near to the Putty Road. MTW had been working to come up with ways to decrease the amount of downtime for the Dragline and noted you can lower the dump heights for the Dragline but ultimately MTW had been turning it off to reduce dust.

MTW had been trialling a boom spray on the Dragline, which may be a first of its kind, and was put into place earlier this year. Andrew advised there was quite a significant amount of water, which is stored on the actual unit, and MTW need to make sure that the boom is not overloaded. Colin noted that the total suspended load at the end of the boom was pretty much at its weight limits and that with regard to dust suppression, whilst the volume of water is a key element, a lot has to do with particles and application i.e. the droplet size.




MTW are still in trial stage with the boom spray, it had not been successful 100% of the time but down time on the Dragline had been reducing, it was noted that there are also some environmental conditions contributing here but MTW felt the water was helping. Graeme acknowledged that it may not be possible to get this 100% perfect but getting part way to alleviate a dust concern is far more acceptable than not doing it. Colin had hoped that if MTW could get this boom spray to work on the Dragline there may be potential for it to work on others as well.

ACTION 2: MTW to organise a Site Tour to the Dragline to view the Boom Spray on trial at a future meeting.

Inter-Agency Audit Program on Dam Safety

Andrew advised that each year Government identify focus areas in the industry and last year this was on Dam Safety. The Department of Planning, Department of Industry; the Resources Regulator, and the EPA set some water controls and selected some sites, reports from these sites were then audited and all that information collated to provide recommendations for industry on where to improve their practices. Mount Thorley operations was selected as a site to be audited.

NSW EPA findings

-  57 Compliant
-  **5 Code Yellow**; which are low priority but still need to be addressed e.g. clearing vegetation off dam walls.
-  **17 Code Blue**; these are Administrative requirements i.e. that need to be addressed but do not have any direct bearing on environmental impacts. For example; MTW was asked to provide more detail about accountable people in their Pollution Incident Response Management Plan.

Department of Planning and Environment

- + 1 Non-Compliance; Dam 5S needs de-silting
- + 16 Compliant.

Department of Industry; Resources Regulator - Recommendations:-

- + RTCA review of the D5 Risk Assessment and prepare a principal Hazard Management Plan for inrush and inundation for the prescribed dams on site.
- + RTCA review the need for, and frequency of, ARD testing with the nominated Dam Engineer and revise O&M manuals if required.

MTW has provided responses to each of those actions, indicating if they are going to address these or if they are already in place. These reports remain public as is, however the time for finalisation of the overall report was not known.

Colin explained that a Hazard Management Plan for inrush inundation tended to be more typically related to underground mining, as it is around the potential flooding of a mine and prevention of that type of incident, and that was why MTW had not picked it up. Colin noted that if the actual risk was of Dams potentially bursting around the site, that would be captured in many other Management Plans.

Graeme felt that Dam management was also applicable to farmers who put structures into paddocks to control in-rush and move water from significant rain events to where it can be stored and that there are a range of options for this. Colin confirmed that is the current practice for MTW.

Social Impact Management Plan (SIMP)

Travis confirmed that he had met with the CCC except for Ian and thanked the group for their good honest feedback. Travis advised that Drop-In Sessions were being planned for June to try and cover as many people in the community as possible.

There had been quite a lot of common feedback and Travis captured this in the table below with the highest priority at the top.

- + ***Property Value;*** in the Bulga area
- + ***Property Management of Coal and Allied owned property;*** how current properties and potential future purchases (including commercial properties) are managed
- + ***Town Centre*** Enhancement of this area
- + ***Town & Town Entrance;*** Overall visual amenity including properties owned by C&A on their side of the Bridge.
- + ***Communication and Engagement;*** needs to be more inclusive, cover a broader section of the community and more areas of interest. To get more information back out to the community on Committees such as the Heritage Committee
- + ***Community Investment opportunities, particularly Site Donations;*** need to increase awareness about these.
- + ***Marketing of Region***
- + ***Concern around definitive language;*** to be more definitive in statements such as from "we may" to "we will" before handing over to Yancoal

Graeme noted that Council had called for Tenders for the Water Supply System for the Village and this had been advertised in the Newcastle Herald. Graeme noted that this was for a reverse osmosis system and that was of interest as Vignerons use this process in their grape product to reduce water content and increase the potential sugar level.

Community Development Fund

Programme	Partner	Value
Enterprise Facilitation	Sirolli Institute	\$45,000
UHWTAWF – Positive Education Program	Upper Hunter Where There's A Will Foundation	\$80,000
Science and Engineering Challenge, and SMART Program (2015-2017)	University of Newcastle	\$83,952
Upper Hunter Education Fund Scholarships (2015-2017)	Upper Hunter Education Fund	\$60,000
Business Development Officer	Singleton Business Chamber	\$72,000
University of Newcastle Scholarships	University of Newcastle	\$80,000
Youth Leadership Program (\$2015-2017)	Outward Bound Australia	\$245,332
Singleton Economic Development and Funding Coordinator (2015-2017)	Singleton Council	\$100,000
HSC Study Camps	Upper Hunter Education Fund	\$24,000
RFS Datasign	Bulga RFS	\$24,500
STEM Lego Robotics Program	Australian Christian College Singleton	\$10,420
Ready 4 School Program (2017-2018)	Jerrys Plains Public School	\$58,000
Total Steers Challenge (2015-2017)	Total College	\$25,725
Early Learning Program (2017-2018)	Milbrodale Public School	\$64,000

Site Donations

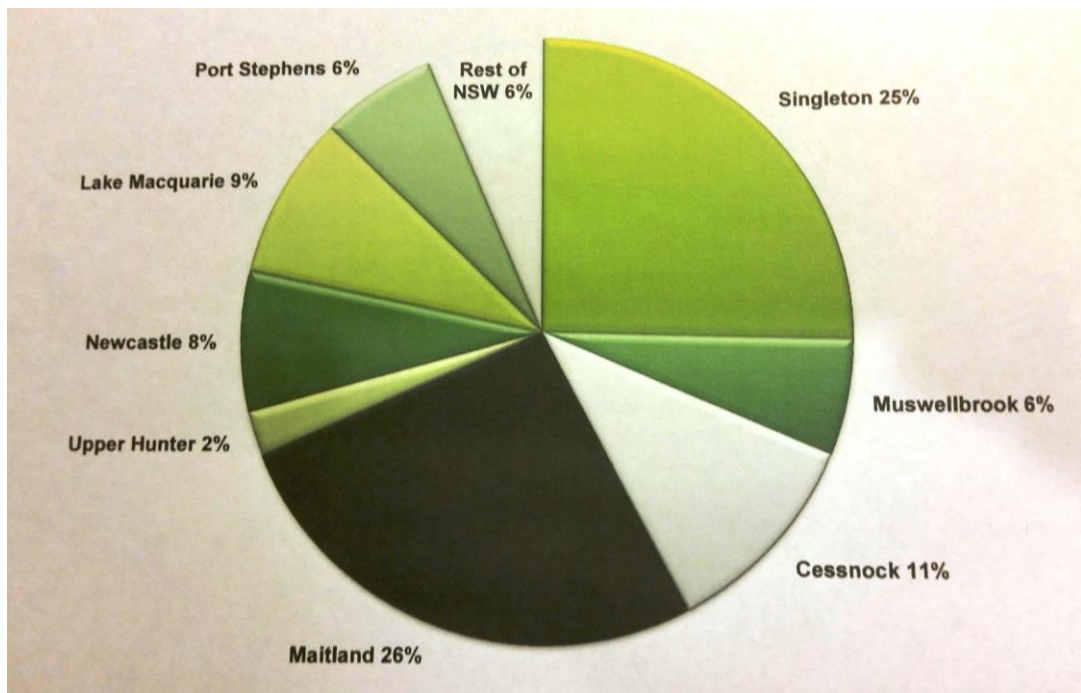
- ✓ Rotary Club of Singleton on Hunter – 2017 Singleton Art Prize - \$5,000
- ✓ Australian Families of the Military – Mental Health Retreat - \$600
- ✓ Wildlife Aid Inc - \$2,000
- ✓ Singleton Business Chamber - International Women's Day event - \$775
- ✓ Cancer Council NSW – Singleton Relay for Life- \$2,500
- ✓ Singleton Junior Rugby League Club - \$2,500
- ✓ Singleton Junior Rugby Club - \$2,500
- ✓ Northern Agriculture Association Inc – Singleton Show - \$3,125
- ✓ Glendon Brook Hall Inc - \$2,000
- ✓ Singleton Pony Club - \$500
- ✓ Singleton Theatrical Society - \$1,500
- ✓ Little Bit of Italy Festival - \$6,902

Total: \$29,902

Graeme informed the group that with the Rotary Club of Singleton on Hunter - Singleton Art Prize, sponsorship money was raised from a range of organisations. These funds were used in part to fund the operation but also the prizes. Graeme advised that profit from the Art Show was then also distributed to many other organisations through Rotary contacts and felt that this was of great benefit. Travis explained the Community Development Fund was more about developing capacity and Site Donations leaned to more grass roots type projects.

People working at C&A across the Hunter Valley; Mount Thorley Warkworth & Hunter Valley Operations

**There are 2,703 people, including contractors, working across the Hunter Valley
25 % reside within the Singleton Shire**



- ✚ This includes Role Replacement Contractors e.g. Cat 1 Contractors.
- ✚ Does not include one off Contractors i.e. when people are brought in and engaged to do a specific job.
- ✚ These are Contractors on site most of the time along with C&A'S own people.
- ✚ This split indicates where people are across both sites i.e. MTW & HVO with the data for each site being split pretty much the same.
- ✚ 70% are within less than a 40 minute drive and the vast majority of that are 10, 15 or 30 minutes.
- ✚ 90% are within one hour's drive of site.
- ✚ C&A do try and keep people as local as they can.

ACTION 3: In response to a request from Hollee; MTW (Travis) to clarify if the numbers exist to split the percentages of where people are located individually for MTW and HVO and if so provide them at the next CCC.

ACTION 4: In response to a query from Stewart; MTW (Travis) to provide a breakdown on the people working across site into Contractors and full time Employees.

It was noted that it had seemed that house prices were starting to at least stabilise and that could be seen by the turnover of houses increasing a bit, this may also result in seeing more people coming into town. Graeme found that interesting, though there is the thesis that due to the Hunter Expressway some people are happy to live in Newcastle or closer to the Coast because they can get to the Bulga area more quickly.

Colin advised that he had been looking at these statistics over a number of years and whilst there had been ebbs and flows, they largely hadn't changed. Colin's observation had been that people living in Lake Macquarie, Port Stephens and Newcastle was about the same as it has always been and often people who like to live local continue to do so. Sometimes families move to accommodate children starting sporting or special education at a certain location and also empty nesters may move closer back home.

Adrian felt that it came down to people weighing up the cost of living versus the cost to travel and that some towns are more expensive to live in than others.

Stewart mentioned a figure of 1,300 that had been used for years in relation to employment levels and Colin advised that the most recent count that he had seen had been 1,365.3 full time employees and that this included contractors who are in role replacement positions but does not include people coming in to do a special job.

Stewart asked if that was the full time equivalent and Colin responded the head count is slightly less than that. Stewart queried someone that may come in and just do a few hours per week and Colin responded they would not be included in the Cat 1 Contractors.

Colin provided the example of a planned shut-down, where there may be 200 people through the plant on that day and advised that they would not be in that count. However, if there was a Contractor on site who is a Maintainer coming to spend 6 months while waiting for a replacement for the role, or even permanently on site as a Contractor, they would be included in those numbers, for example; Truck Drivers and Crib Relief.

Christina was concerned that since December 2014 the company's website says there are 940 full time employees and questioned how that relates to the 1,300 count. Colin felt that this may be the difference between Operators/Maintainers and Support Staff, as there is all the support staff around site as well, or alternatively the figures may be out of date.

Colin advised that all statutory returns have been based on the numbers across C&A that were presented today.

ACTION 5: In response to a query from Christina; MTW (Travis) to check what the Employment figures on C&A's website relate to.

Stewart queried how an employee working three days per week would be accounted for and Colin advised they would be classed as a 60% and that is why there is a ".3" figure in the 1,365.3. Colin gave the example of three people in his team with two people doing 5 days per week and one person 3 days, the full time equivalent would be 2.6 but the head count would be 3, plus Colin would equate to 4.

7 General Business

8.1 Focus Topic: 2016 MTW Annual Review :

Andrew asked members if there was any feedback from the Annual Review as MTW had a specialist on standby to answer any questions.

Graeme noted that the review had been signed off on the 28th of March and that the CCC had only received this last week, which had made it difficult to review before today's meeting.

Christina noted a few differences and was amazed about how much data had been taken out of this report when compared to last years, as an example Christina noted that under Environmental Performance - Management - Sound Attenuation Program that Sound Power Control had been in the 2016 report but not the 2017. In addition she would have expected that the comparison of Water Quality Data and E.A. predictions to have continued under the Groundwater section.

Andrew advised the differences were a result of following Department of Planning Guidelines and that there had been some alterations on what the company is required to put in the Annual Review and that the Department's goal had been to make this report more succinct. Andrew confirmed that MTW prepared the report under the direction of the Department's guidelines and the subject headings they had chosen.

Andrew confirmed that the Annual Review had been submitted to the Department and their feedback after review was that they wanted five or six additional items in the report and these were around the rehabilitation domain, these were due for submission on the 9th of June.

ACTION 6: When approval has been received from the regulator, MTW (Andrew) to update members on the additional items that were required by the Department for inclusion in the Annual Review.

ACTION 7: Col asked that MTW (Jimmy) keep the Annual Review on the Agenda for the next meeting to allow members more time to review this document and to provide another opportunity for continued discussions.

ACTION 8: Colin suggested that MTW (Andrew) provide the CCC with a link to the new Department Guidelines for Annual Reports.

8. Community Feedback

Stewart

Stewart raised the action that Sue Moore had previously called for being that MTW keep the CCC up to date in matters pertaining to C&A's application to Singleton Council to close Wallaby Scrub Road. Stewart acknowledged that MTW had made mention of an update in the community member letter but he could not recall receiving anything in regard to that matter. Col confirmed that had been Action 5 from the previous meeting which was if there was anything regarding the application to Council then the CCC should be kept up to date and it was his understanding that the company had provided that update today.

Colin advised there had been no formal process and that what had happened is that on the 20th of February the company presented to Council on Wallaby Scrub Road in a Public Forum and this item had been on the Agenda. Outside of that there had only been business as usual calls and general meetings on matters such as Land Development Consents and that type of thing but not formally about Wallaby Scrub Road.

Colin is happy to share formal matters if Wallaby Scrub Road is to be closed and when that is appropriate, he reiterated that this matter had now been through the public exhibition phase and felt that the earliest the next Council meeting will come up would be July. Colin noted that once all of this process has finished and if the Council was to move forward and agreed to progress the road closure then the company would follow a standard approach to negotiating the price on that which would be with two negotiators being Colin and a company colleague. That process has not started now as that would not be appropriate.

Stewart felt there had been what was referred to a workshop with a previous MTW Manager and Council about Wallaby Scrub road and that nothing had come forth about that and that if there were negotiations into the sale of an asset, which the Council was doing, he was surprised if they would agree to such a move if there was not a monetary amount come up in those except to proceed to close the road. Colin advised there is already plenty of precedents about what it costs for a valuation of a road and that mining companies buy and sell roads quite regularly.

Colin advised his first interaction with Singleton Council was by way of an introduction to Sue Moore on the 20th of February, he had also liaised with Jason and Gary on numerous matters such as an invitation to site to look at operations, the Lands Right Claim and a whole list of general items, not the least being Colin's philosophy of rebuilding trust and credibility with the community.

Stewart asked if it would be possible to have temperature inversions included on the MET tables in the monthly reports, he felt that this is measured and on what days, and it would be helpful to have that included.

ACTION 9: MTW to investigate the possibility of adding detail to the MET data provided in the Monthly Reports, indicating days where there had been temperature inversions.

Stewart felt that the Mount Thorley overburden dump had gone to a brand new height being another tier higher on the southern end towards the boundary with Bulga Coal and asked if that is over the height of 190 yet. Stewart felt this was way above the height of the original overburden, an area that was rehabilitated then dumped over.

ACTION 10: MTW (Jimmy) to provide the height of Mount Thorley overburden dump to Stewart out of session.

Christina

Property Sales

Christina wanted to make the group aware that she had been advised that two property sales in Bulga had recently fallen through due to two separate banks in Singleton saying they would not lend to anybody wishing to purchase in Bulga and she felt that was a huge impact for residents given that if buyers were not able to borrow, that would mean property owners can't sell. Christina had understood the bank's terminology to be "to not lend in Bulga".

Colin noted that the individual finance decision of a bank is obviously with the private individuals and based on their personal risk. Andrew felt it would be good to understand the facts behind this, potentially being also in line with talks around the marketing of Bulga and if this happened to be relevant to an individual opposed to a broader issue.

Christina and company reps agreed that it would be appropriate to contain that information until all the facts were known and Christina confirmed she was looking into getting more detail on this matter.

Mitigation

Christina asked if the mine puts mitigation into a property, such as air conditioning, does the money that the company invested remain their right in perpetuity until the property is sold, for example if the mine puts in double glazing to a value of \$30,000.00 and then if the property is sold, does the property owner have to pay back that capital investment plus interest.

Travis confirmed that this was around Mitigation Agreements and reassured Christina that was not the case. Travis advised that if someone has had mitigation installed on their property e.g. ducted air-conditioning that there is an agreement that if the mine was ever to acquire that property, it would be valued as if it did not have the ducted air-con, so that would not be the full value of the capital improvement.

Travis noted then that if the person with the mitigation installed sold their property in a private sale i.e. to someone other than the mine, then this agreement would be novated, as the next person to own the property would have this mitigation over that property. Stewart felt this would then become a permanent encumbrance on the new property owner and Christina agreed.

Christina advised she would send Travis what detail she has on the Mitigation Agreement as that was how she had interpreted it and asked for confirmation that people do not have to pay back a capital investment to the mine. Travis confirmed that is definitely not the case.

Blasting times and dates

Christina noted that Glencore advertise both dates and times when doing blasting, whereas MTW advertise the date only, she felt that the company must have a rough idea on time.

Andrew responded that the removal of advertised times was a result of feedback from a previous CCC Meeting where it had been agreed to take the times off signage and to point people towards Hotline as the information is more up to date. In addition it had been agreed to move the Hotline phone number to the top of print advertising where it would be more prominent. Andrew explained the reason for removing the time was due to the potential variability from the advertised time to the actual blast time and that had been the issue. Given that blasting times may change due to weather conditions, it was agreed to leave the time off. Colin felt the company could re-look at advertising blast times, acknowledging that if the weather was to change, then the time may be earlier or later and that would be the risk.

Christina confirmed that is why she had asked the company if they would be able to text the times for blasting to those who wished to receive that information.

ACTION 11: MTW (Jimmy) to keep the option for MTW to reinstate the advertising of blast times as an agenda item for the next meeting, as raised by Christina.

Graeme

Graeme noted the area from Wallaby Scrub road to the new cross over is pretty much a black spot area for mobile phones and just raised that as a communication issue in the area.

Ian (via email)

Document Distribution

Ian advised the distribution of documents was untimely for members who need time to read them and seek comment from the community. Graeme agreed that the Business Papers were just a bit late and prefers how the company provides a printed version, he found that due to the volume of reading he tends towards multiple reads to get through all the documents.

Colin advised that the company would change that and there was a general discussion around the preferred amount of time members would like to have to review the Business Papers.

ACTION 12: MTW (Jimmy) to distribute the Business Papers in hard copy to members two weeks prior to the Meeting date. Any data not available at that time will be provided to Members (email and hardcopy) as soon as it becomes available prior to the Meeting.

Speed Limit Signs on Putty Road

Ian had received concern from the community in relation to the 80 kilometre speed limit signs on the western side of the new road works. As the signs are a kilometre before the road works, drivers tend to ignore them as there is no apparent danger on that section of road. Community members believed that the speed signs should be moved closer to the roadwork's as is the case on the eastern side.

Colin advised that comes down to the Traffic Management Plan which is approved by either Council or the R.M.S. and that the company is limited to what the R.M.S. agrees and have to follow what they say. Graeme questioned the mandatory distances, because of the variability on each side of the road, asking which one was right. Colin explained that this is not about distances but rather about road works and the company has to have a Traffic Management Plan that is recommended and approved by the R.M.S.

ACTION 13: In response to Ian's query Col requested that MTW (Rob) provide a copy of the Putty Road underpass project Traffic Management Plan (TMP) that has been approved by the R.M.S. to the CCC

Hollee

People working at C&A

Hollee felt that 25% of workers residing in Singleton was pretty low and Colin advised the key message is 25%, plus or minus, is what the company is getting out of there. Colin confirmed that 70% are within a half hour drive, 90% are within an hours' drive and that is the key message the company is getting out of those statistics.

Hollee is concerned that means 75% of the workers are not living in areas that are in the polluted zone, she felt that mining is effectively digging up Singleton's back yard and that the 25% is not good enough. Hollee feels C&A have the final say in who works for the organisation, including contractors, and this indicates that one in four people are putting in an application for an unskilled untrained labour job. Hollee felt that 90% of these applicants should come from Singleton. Colin noted that with contractors it is often difficult to get them to come and stay and work in the same area, as by nature of being a contractor they tend to move between different places and be more regionally located.

Hollee asked if the company could supplement the report she requested for a major contractor on site for Dump Truck Traineeships with an evaluation to let Hollee know the percentage of new employees from that company come from Singleton. Colin felt the company could provide that detail within reason noting that the other factor amongst all of this is also the requirement for the right behavioural fit for the companies culture e.g. the right safety approach and that it was not just about having the skill set.

Hollee feels that the Labour Hire Companies are absolutely inundated with applications from Singleton for what they call "Clean Skin / Newby" roles, she understood there were dozens and dozens that apply and was concerned that they did not get a call back. Hollee explained this also includes everyday people, who have been in work as Forklift Drivers and Operators, that have never had a safety concern or incident and have glowing recommendations from their employers.

Colin noted there are many aspects when looking for contractors; the behavioural aspects associated with that, also the requirement to look for indigenous diversity and there is also local in amongst that. Colin confirmed that there tends to be a high turnover of contractors, a lot of people don't stay as they may not like a roster or the hours required for night shift, but then some do return as well.

That means the company is fairly regularly looking for people and C&A has had good success stories with crib break relief / lunch breaks where people come in for a few hours in the morning, midday or evening and that fits in well around their family life. If there are people who have the right behavioural fit and the right aptitude to pick up the skill and they are local, Colin would much rather put them on, as an alternative to putting on people that potentially would drive 50 minutes on a high risk road to Newcastle for example.

Hollee queried if the percentages in the Pie Chart indicated dollar spend or where people lived and Colin confirmed that it indicated where their permanent place of residence was. Hollee asked if she could receive a report on dollar spend for the last quarter broken down by postcode. Colin felt this would be achievable at a C&A level but not for individual sites. Hollee asked if those reports could be supplemented with the Local Procurement Policy.

ACTION 14: MTW (Colin) to liaise with Programmed regarding the availability of HR statistics.

ACTION 15: MTW (Colin) to provide feedback to Programmed in regards to call-backs to applicants

ACTION 16: In response to a request from Hollee; MTW (Travis) to provide the dollar spend by postcode level to marry up with the Pie Chart presentation of people working at C&A and to provide the Local Procurement Policy to the CCC.

9. General Business

Introduction to Yancoal

With the next meeting scheduled for the 14th of August, Colin felt that if Yancoal transition on the 1st then it would make sense to have an out of session meet and greet with the CCC prior. Hollee advised she would be an apology for that meeting.

C&A Control Room in Singleton

Col suggested that the next CCC Meeting be held in Singleton so that it could coincide with a brief tour of the Integrated Operations Centre (IDC). Members agreed that they would like to view this and Jimmy is to organise this per the next meeting times below.

10.Future Dates

10.1 Next Meeting

14th August 2017

2.00 to 4.00 p.m., Singleton Office

Meeting 2.00 to 3.30 / Tour Integrated Operations Centre 3.30 to 4.00

ACTIONS ARISING FROM THIS MEETING

Action	Page	Description
1	2	MTW (Andrew) to update members on progress with the HVO Blast Notification System (Text message updates).
2	8	MTW to organise a Site Tour to the Dragline to view the Boom Spray on trial at a future meeting.
3	11	In response to a request from Hollee; MTW (Travis) to clarify if the numbers exist to split the percentages of where people are located individually for MTW and HVO and if so provide them at the next CCC.
4	11	In response to a query from Stewart; MTW (Travis) to provide a breakdown on the people working across site into Contractors and full time Employees
5	12	In response to a query from Christina; MTW (Travis) to check what the Employment figures on C&A's website relate to.
6	13	When approval has been received from the regulator, MTW (Andrew) to update members on the additional items that were required by the Department for inclusion in the Annual Review.
7	13	Col asked that MTW (Jimmy) keep the Annual Review on the Agenda for the next meeting to allow members more time to review this document and to provide another opportunity for continued discussions.
8	13	Colin suggested that MTW (Andrew) provide the CCC with a link to the new Department Guidelines for Annual Reports. ✓ ACTIONED; Jimmy provided the link to the DP&E Annual Review Guidelines (October 2015) to CCC Members on 22 June.
9	14	MTW to investigate the possibility of adding detail to the MET data provided in the Monthly Reports, indicating days where there had been temperature inversions. Jimmy emailed Stewart on 30 June seeking clarity on the detail required in the Monthly Reports
10	14	MTW (Jimmy) to provide the height of Mount Thorley overburden dump to Stewart out of session. ✓ ACTIONED; Jimmy advised the CCC on 23 June that the lift that Stewart had referred to had a height of 155RL at the tip head and that would be the maximum dump height planned for MTO.
11	18	MTW (Jimmy) to keep the option for MTW to reinstate the advertising of blast times as an agenda item for the next meeting, as raised by Christina.
12	15	MTW (Jimmy) to distribute the Business Papers in hard copy to members two weeks prior to the Meeting date. Any data not available at that time will be provided to Members (email and hardcopy) as soon as it becomes available prior to the Meeting.
13	16	In response to Ian's query Col requested that MTW (Rob) provide a copy of the Putty Road underpass project Traffic Management Plan (TMP) that has been approved by the R.M.S. to the CCC. ✓ ACTIONED; Rob provided the CCC with the Traffic Management Plan for the Putty Road Underpass works on 21 June. This Plan has been approved by the RMS and had to be designed to RMS Standards.
14	17	MTW (Colin) to liaise with Programmed regarding the availability of HR statistics.
15	17	MTW (Colin) to provide feedback to Programmed in regards to call-backs to applicants.
16	17	In response to a request from Hollee; MTW (Travis) to provide the dollar spend by postcode level to marry up with the Pie Chart presentation of people working at C&A and to provide the Local Procurement Policy to the CCC.

ONGOING ACTION: MTW to keep the CCC up to date in matters pertaining to C&A's application to Singleton Council to close Wallaby Scrub Road, either at a meeting, or out of session should there be any update outside of two weeks prior to the next CCC Meeting.