



Mount Thorley Warkworth

Community Consultative Committee (CCC)

**Business Papers – December 2017**

Materials supplied to members for the meeting on the 4<sup>th</sup> December 2017.

# Contents page

<b>1.0 Complaints</b>	<b>3</b>
<b>2.0 Incidents</b>	<b>4</b>
<b>3.0 Environmental monitoring</b>	<b>6</b>
July 2017	6
August 2017	6
September 2017	6
<b>4.0 Rehabilitation plan</b>	<b>7</b>
<b>5.0 Acquisition Update</b>	<b>13</b>
<b>6.0 Website Uploads</b>	<b>14</b>
<b>7.0 Community Investment &amp; Support</b>	<b>16</b>
Mount Thorley Warkworth (MTW) site donations	16
Yancoal Corporate Investment	16
<b>8.0 Lydes Lane and Putty road Intersection</b>	<b>17</b>

## **Appendices**

Appendix A – Environmental Monitoring Report July 2017

Appendix B – Environmental Monitoring Report August 2017

Appendix C – Environmental Monitoring Report September 2017

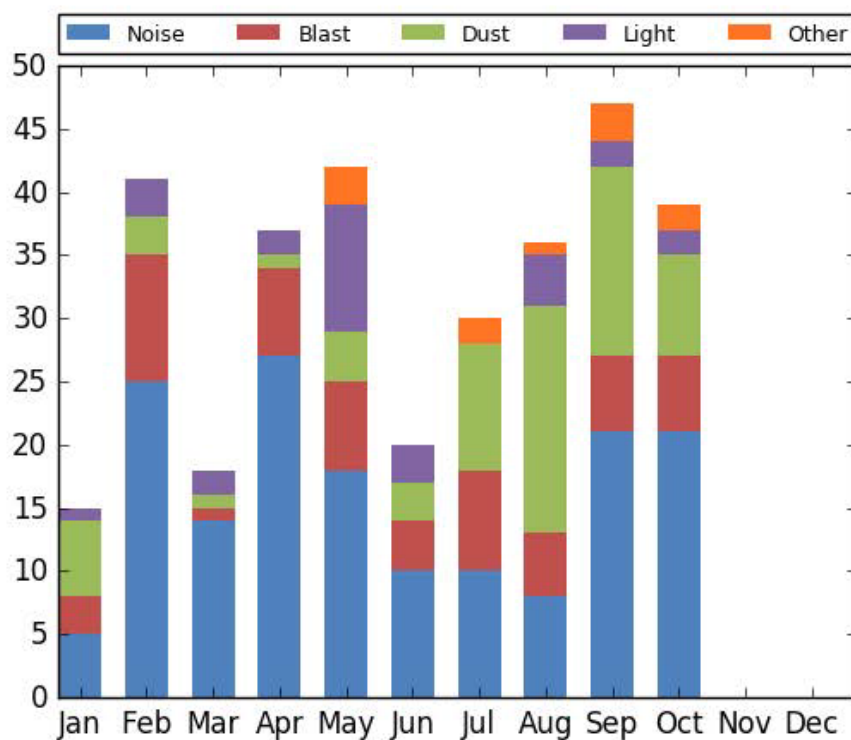
Appendix D – Acquisition Update – Mount Thorley Warkworth Property Portfolio

# 1.0 Complaints

Complaints overview for end of month period 2017 (31.10.2017)

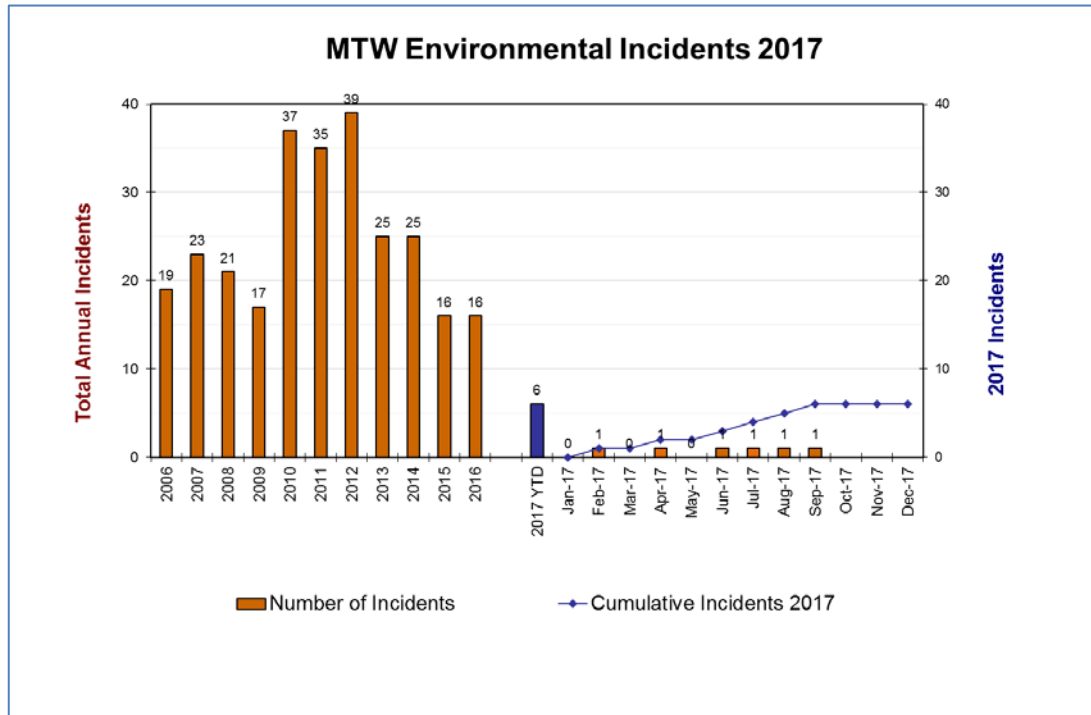
## Mount Thorley Warkworth Monthly Complaints Summary

	Noise	Dust	Blast	Lighting	Other	Total
January	5	6	3	1	0	15
February	25	3	10	3	0	41
March	14	1	1	2	0	18
April	27	1	7	2	0	37
May	18	4	7	10	3	42
June	10	3	4	3	0	20
July	10	10	8	0	2	30
August	8	18	5	4	1	36
September	21	15	6	2	3	47
October	21	8	6	2	2	39
November	-	-	-	-	-	-
December	-	-	-	-	-	-
Total	159	69	57	29	11	325



## 2.0 Incidents

### Overview of environmental incidents for period YTD 2017 (14.11.2017)



## Incident summary for the period 1 July to 31 October 2017

Date	Details	Key Actions	Aspect
21-September-2017	<p><b>Trespass and illegal tree clearing in MTW Biodiversity Area</b></p> <p>Trespass and illegal tree clearing by unknown person. Approximately 35 full sized trees have been felled. In the process of clearing tracks to fell approximately 100 small trees.</p>	<p>Incident investigated.</p> <p>MTW Security personnel carrying out investigation.</p> <p>Incident reported to the Department of Planning &amp; Environment (DP&amp;E) and the Department of Environment &amp; Energy (DoEE).</p>	Biodiversity
18-August-2017	<p><b>Minor tailings leak from a breather valve on transfer line.</b></p> <p>A small amount of tailings spilt from a breather transfer line breather valve. Spillage was contained onsite.</p>	<p>Earthen bunding installed to prevent further spillage.</p> <p>Alternative breather valve to be sourced and installed.</p>	Waste

## 3.0 Environmental monitoring

Monthly summaries of environmental monitoring for the period  
1 July 2017 to 30 September 2017

### **July 2017**

Attached as **Appendix A**

### **August 2017**

Attached as **Appendix B**

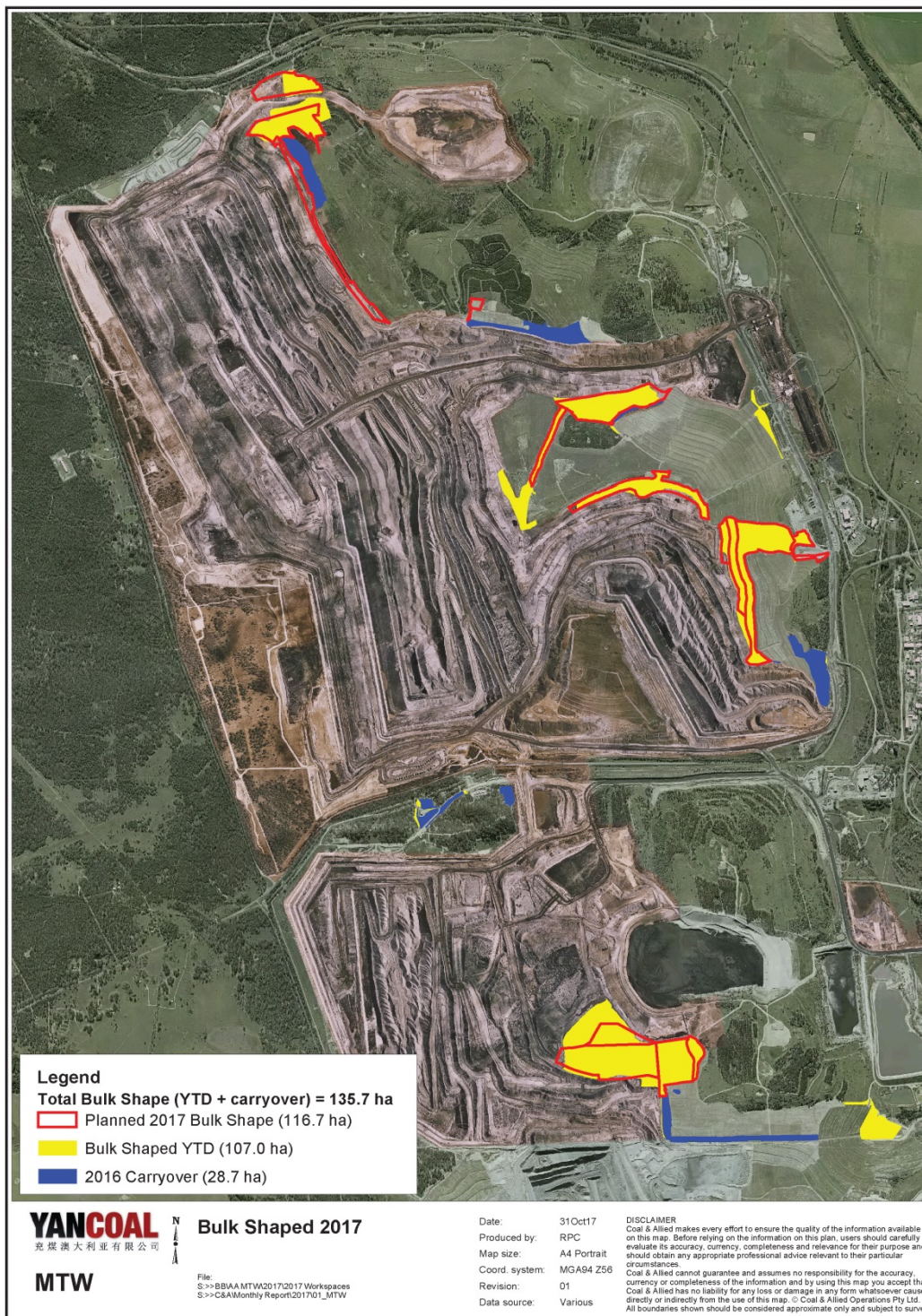
### **September 2017**

Attached as **Appendix C**

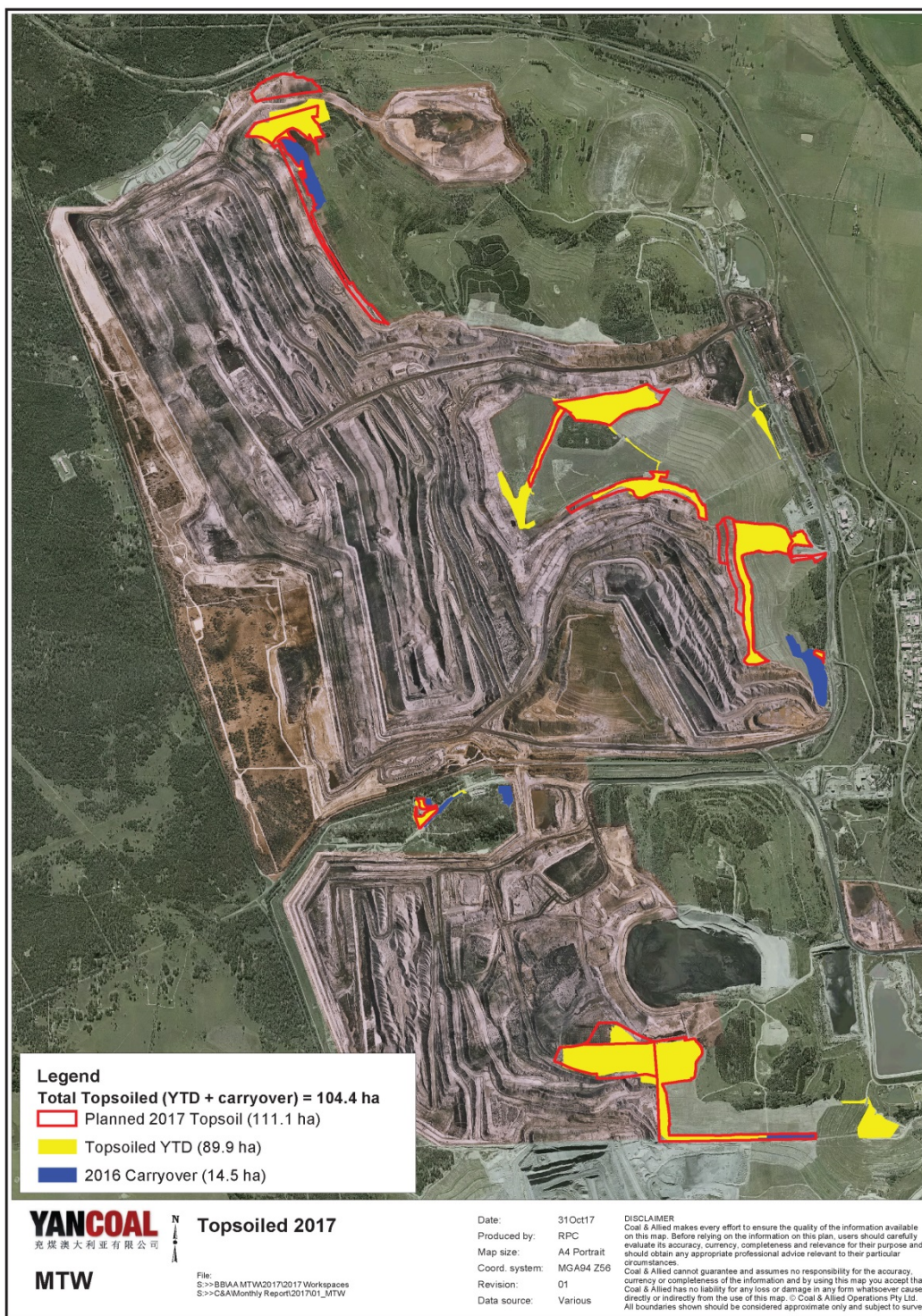
## 4.0 Rehabilitation plan

As of October 31<sup>st</sup>, delivery of the 2017 rehabilitation plan is progressing well with a total of 135.7 ha of the targeted areas bulk shaped, 104.4ha topsoiled, and 62.8 ha seeded.

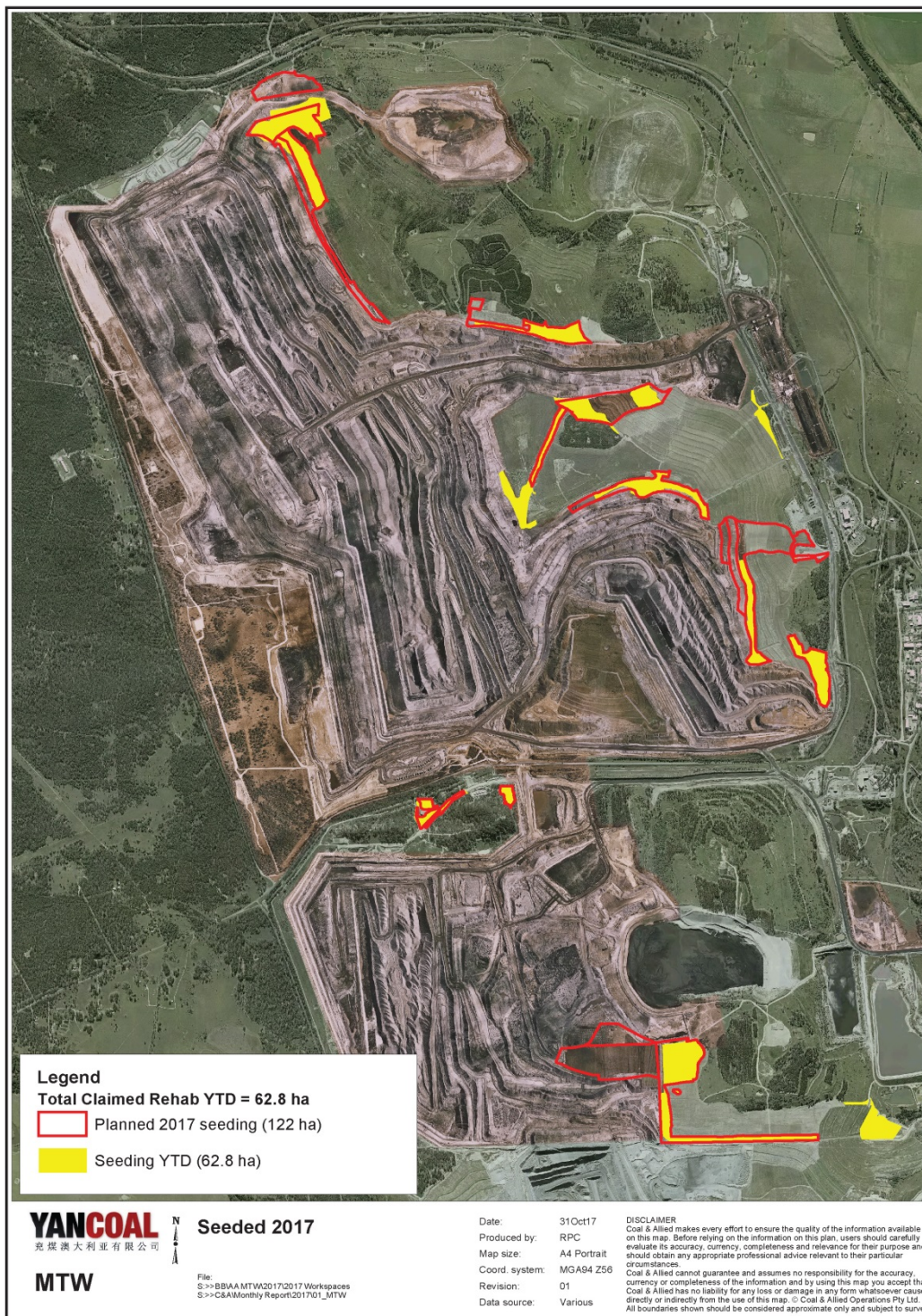
Year to date disturbance is 39.2ha with 30<sup>th</sup> June to 31<sup>st</sup> October comprising of 8.2ha. The disturbance during this period was evenly distributed between WML and MTO leases as a result of infrastructure (including implementation of water management) and dumping preparation.



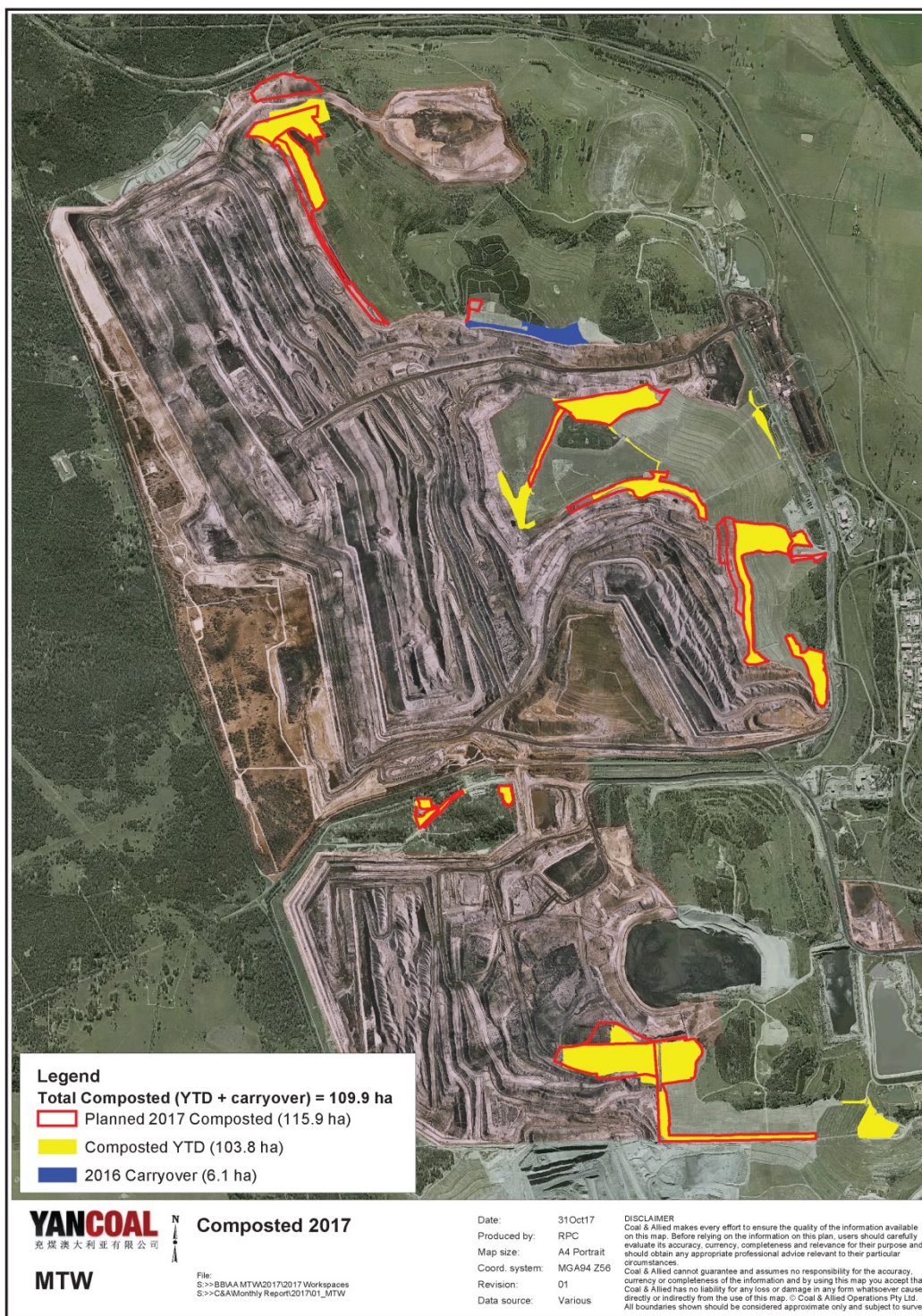




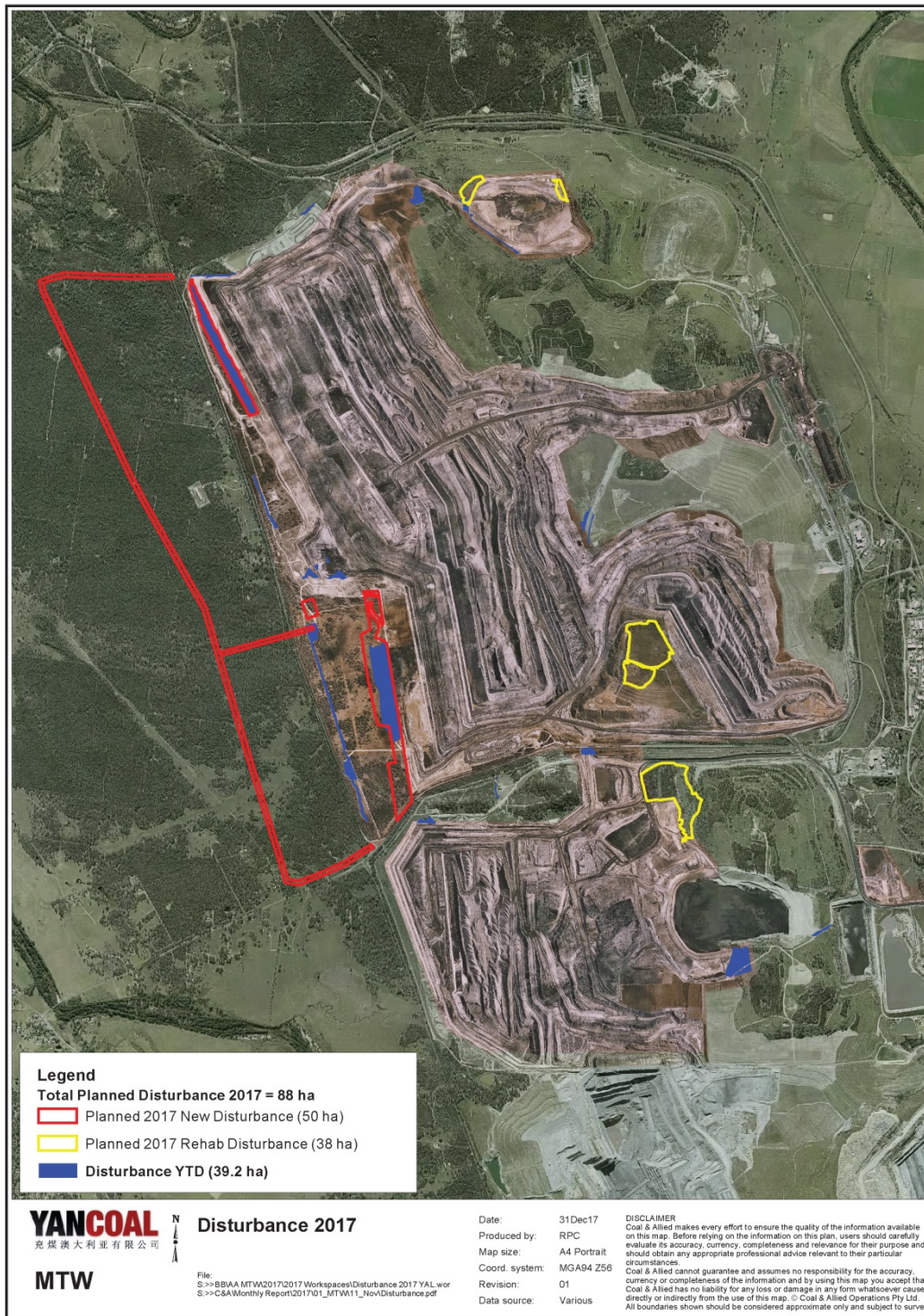












## 5.0 Acquisition Update

A presentation with a property acquisition update for Mount Thorley Warkworth is included in **Appendix D** of this Business Paper.

One acquisition was made to the property portfolio during the July – October period.

## 6.0 Website Uploads

Table 1 below is a list of all documents uploaded to the MTW library of the Yancoal Australia INSITE website during the period of 1<sup>st</sup> July 2017 31<sup>st</sup> October 2017. Uploads have been characterised as Additions, being a new document, or a Change, meaning a new version of an existing document. Please refer to the library page of the website for document contents:

<https://insite.yancoal.com.au/document-library/mtw>

**Table 1: Uploaded Documents to the Yancoal Australia INSITE Website**

<b>Document Title</b>	<b>Upload</b>
Mount Thorley Warkworth Environmental Protection Licence 1376 1976 Monthly Meaningful Summary July 2017	Addition
Mount Thorley Warkworth Environmental Protection Licence 1376 1976 Monthly Obtained Data Summary July 2017	Addition
Mount Thorley Warkworth 2016 Annual Environmental Review - Addendum	Addition
Mount Thorley Warkworth Annual Environmental Review 2016 - Appendices	Addition
Mount Thorley Warkworth Mining Operations Plan	Addition
Warkworth Local Offset Management Plan	Addition
Warkworth Mine Biodiversity Management Plan	Addition
Putty Road Offset Management Plan	Addition
Warkworth Continuation Operations (SSD-6464) Stage 1 Development Area Aboriginal Heritage Management Plan	Addition
Mount Thorley Warkworth Mining Operations Plan Appendix B Pt2, C and D	Addition
Mount Thorley Warkworth Mining Operations Plan Appendix B Pt1 Continued	Addition
Mount Thorley Warkworth Mining Operations Plan Appendix B Pt1	Addition
Mount Thorley Warkworth Mining Operations Plan Appendix A	Addition
Warkworth Regional Offset Management Plan	Addition
Warkworth Sands Woodlands Integrated Management Plan February 2017	Addition

Mount Thorley Warkworth Environmental Protection Licence 1376 1976 Monthly Meaningful Summary August 2017	Addition
Mount Thorley Warkworth Environmental Protection Licence 1376 1976 Monthly Obtained Data Summary August 2017	Addition
Mount Thorley Warkworth Environmental Monitoring Report July 2017	Addition
Mount Thorley Warkworth Community Consultative Committee Meeting Business Papers August 2017	Addition
Mount Thorley Warkworth Community Consultative Committee Meeting Minutes August 2017	Addition
Mount Thorley Warkworth Community Consultative Committee Presentation August 2017	Addition
Mount Thorley Operations Environmental Protection Licence 1976	Addition
Mount Thorley Warkworth Environmental Protection Licence 1376 1976 Monthly Meaningful Summary August 2017	Addition
Mount Thorley Warkworth Environmental Protection Licence 1376 1976 Monthly Obtained Data Summary August 2017	Addition
Mount Thorley Warkworth Environmental Monitoring Report August 2017	Addition
Mount Thorley Warkworth Environmental Monitoring Report September 2017	Addition
Mount Thorley Warkworth Environmental Protection Licence 1376 1976 Monitoring Data September 2017	Addition

## 7.0 Community Investment & Support

### **Mount Thorley Warkworth (MTW) site donations**

The site donations committee provides an opportunity for employees to assess and make recommendations on requests for sponsorship and donations received by MTW.

Funding is provided in the form of sponsorship or a donation to assist local, community-based organisations. The funding criteria for site donations has been updated to reflect MTW's focus on funding projects and initiatives from the Bulga, Milbrodale, Broke and Singleton areas.

The applications for the last round of Site Donations closed on 3<sup>rd</sup> November.

### **Yancoal Corporate Investment**

Details of the Yancoal Corporate investment fund will be announced in 2018.



## 8.0 Lydes Lane and Putty road Intersection

Meeting between MTW and Council's Traffic and Road Safety Officer held on 3<sup>rd</sup> August to discuss the option to change the current *GIVE WAY* sign to a *STOP* sign on the Lydes Lane and Putty Road Intersections.

Changes to the Putty Road and Lydes Lane intersection can be considered by Council's Local Traffic Committee in accordance with the Roads and Maritime Supplement to Australian Standard 1742 (2009) .

Upon inspection by it was noted that the available sight distance from the exit of Lydes Lane exceeded the requirements of a STOP sign, and therefore rejected the request for change of signage at the intersection.

Roads and Maritime Service s are investigating the feasibility of reducing the allowable speed on Putty Road to 90 or 80km/h at the juncture as an alternative.

The investigation to reduce the speed zone on the Putty Road at the Lydes lane intersection is currently under revision by the RMS and needs to undergo a number of approvals until it can be passed.

Any inquiries regarding this investigation should be made to the RMS.

<https://secure.rms.nsw.gov.au/contact-us/>

Phone 13 22 13 for general enquiries.



## Appendix A

### Environmental Monitoring July 2017



## Appendix B

### Environmental Monitoring August 2017



## Appendix C

### Environmental Monitoring September 2017



## Appendix D

### Acquisition Update - Mount Thorley Warkworth Property Portfolio