



Yancoal
Mount Thorley Warkworth Operations
Community Consultative Committee Meeting
Monday 12 November 2018

Attendance

Chairperson

Colin Gellatly

Independent Chair MTW CCC

Company Representatives

Gary Mulhearn

Environment & Community Manager

Travis Bates

Specialist Community Relations

Community Representatives

Adrian Gallagher

Community Representative

Stewart Mitchell

Community Representative

Christina Metlikovec

Community Representative

Kristy Hedley

Community Representative - Alternate for Ian Hedley

Council Representative

Cr. Hollee Jenkins

Singleton Council

Observers / Presenters

Hayley Frazer

Environmental Advisor / CCC Secretary

Apologies

Ian Hedley

Community Representative

Jason McCallum

General Manager MTW

Minutes

Sarah Purser

1. WELCOME & 2. APOLOGIES; Col welcomed the CCC, apologies were advised and recorded.

3. DECLARATION OF PECUNIARY INTEREST / CONFLICT OF INTEREST; *Standing*; Col advised that both he and Sarah are engaged by Yancoal to provide the services of Independent Chairperson and meeting note taker. Sarah asked to make note that she and Stirling have put forward the concept of local Horse Riding Recreation Grounds for the communities of Bulga & Milbrodale and submitted this proposal to the VPA Committee.

Christina said that she believed this was not of concern in relation to being a conflict of interest, Col agreed however given Sarah's role within the CCC he had felt that it would be best to have this put on record.

4. BUSINESS ARISING - Action Items from the previous Meeting; 13 August 2018

Action; MTW to provide the CCC with dust data from the Mt Thorley Monitoring System for 8 May 2018, and provide an Equipment / Shift Report, in an out of session communication.

✓ Actioned by Gary via email on 21 September 2018.

Action; MTW to organise a Community Information Session and advise the CCC when this is in place.

Gary advised that the company had this in the planning for late November, however it has been their priority to have MTW's General Manager; Jason McCallum in attendance. Due to heavy work commitments leading to the end of 2018 this will not be achievable for this year and MTW have elected to reschedule Community Sessions for early 2019.

Gary explained MTW's objective is to plan these events well and that prior to the session, it is MTW's intent to distribute; a Community Newsletter, Invitation to Members, and potentially follow on with invitations to attend site visits. Gary added that the company intends to organise the Session for the community for Quarter 1 and will keep the CCC posted on their progress with regard to timing.

5. OUT OF SESSION CORRESPONDENCE:-

- ✓ Previous Meeting Minutes; 13 September 2018, Agenda & Business Papers; 31 October 2018
- ✓ Email from Gary; 11 September 2018; Government Gazetted Closure of Wallaby Scrub Road
- ✓ Email from Gary; 24 October 2018; Re: Land Acquisition Updates going forward

6. CONFIRMATION OF THE PREVIOUS MEETING'S MINUTES;

Col confirmed that the Minutes for the Meeting 13 August 2018 had been circulated and following the comments period close had been updated to Endorsed by Chair, these Meeting Minutes were formally confirmed at today's meeting.

7. PROPONENT REPORTS AND OVERVIEW OF ACTIVITIES

PROGRESS OF THE PROJECT

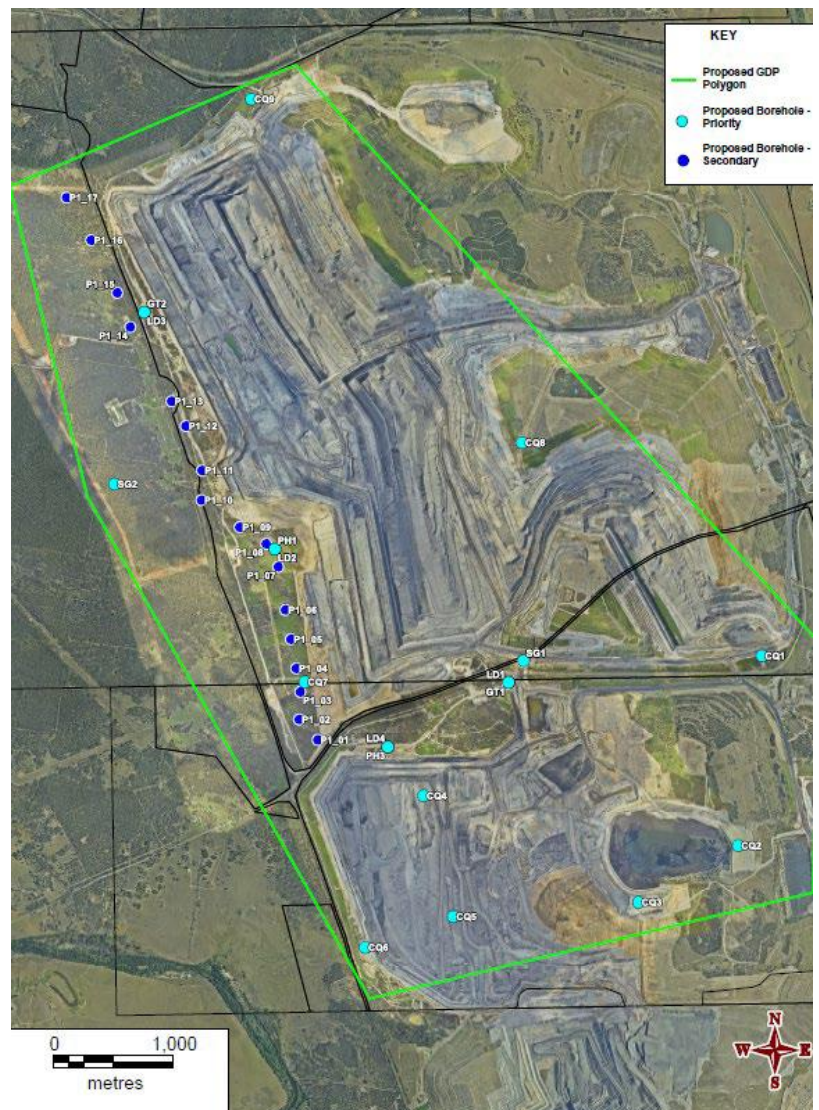
- ✚ Mining continues westward in both Warkworth and Mount Thorley operations.
- ✚ Dragline 102 will move to the south end of Mount Thorley pit early in 2019.
- ✚ Coal processing and train loading operations continue as normal.

Exploration Activities

Exploration activities have continued for the 2018 exploration program with drilling within the current leases.

Gary explained there are four drill rigs doing this exploration work over the site and the company is also looking to do some magnetic and seismic surveys in the future over existing lease areas.

For slide referencing, the general drilling area is identified in the "Green Polygon" This is not Consent or boundary related, it is to identify where drill locations are.



Source : MTW CCC December 2018 Meeting
Presentation Slide Ref # 14

ENVIRONMENTAL MONITORING AND PERFORMANCE**MTW Noise Monitoring YTD**

	# CRO Assessments	# Individual Assessment above trigger	# Nights above trigger
2018 YTD	5670	35	18
2017	5990	18	10
2016	4851	84	34

Downtime

- There had been a significant increase in downtime due to dust, as the year had progressed into the warmer months.
- Dust had been challenging due to the conditions associated with this dry period, particularly in September.
- Whilst some rain provided a bit of relief, MTW had made many changes to operations accordingly.
- There had been 35 individual hand held assessments undertaken over criteria, tracking for noise, all resolved within the time period.

Rehabilitation

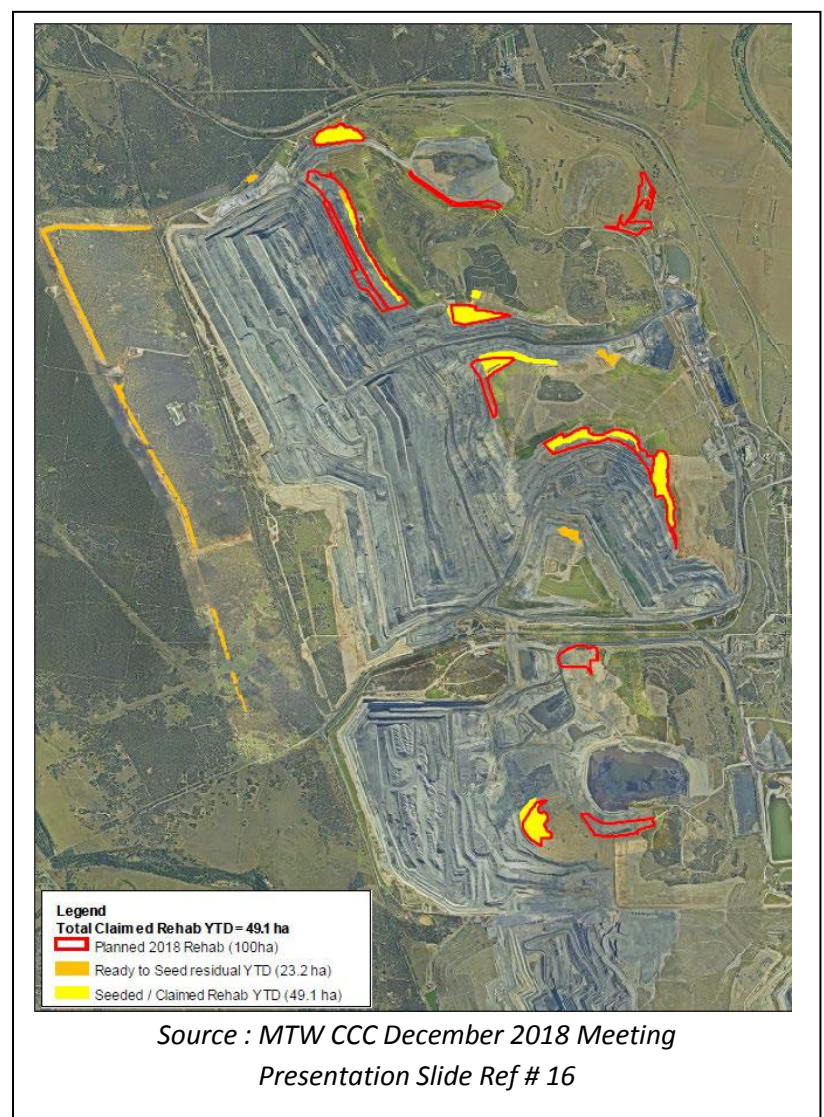
Rehabilitation target for 2018 = 100 ha seeded (outlined in red)

Works completed so far in 2018:-

Further progress has been made to date against the 2018 MTW Rehabilitation Target of 100ha, with bulk shaping completed on 71.5ha. Rehabilitation activities have progressed further on many of these areas such that 33.7ha have been topsoiled, 53.9ha composted and 49.1ha have been seeded.

The year to date disturbance is 148.2. The bulk of disturbance that has occurred since the last meeting is due to clearing associated with the construction and installation of water management infrastructure on the western side of Wallaby Scrub Road, as well as stripping for mining at the Warkworth West Pit South West.

Key works for Quarter 4 2018 (October-December) is seeding and final rehabilitation at North Pit North, Mount Thorley.

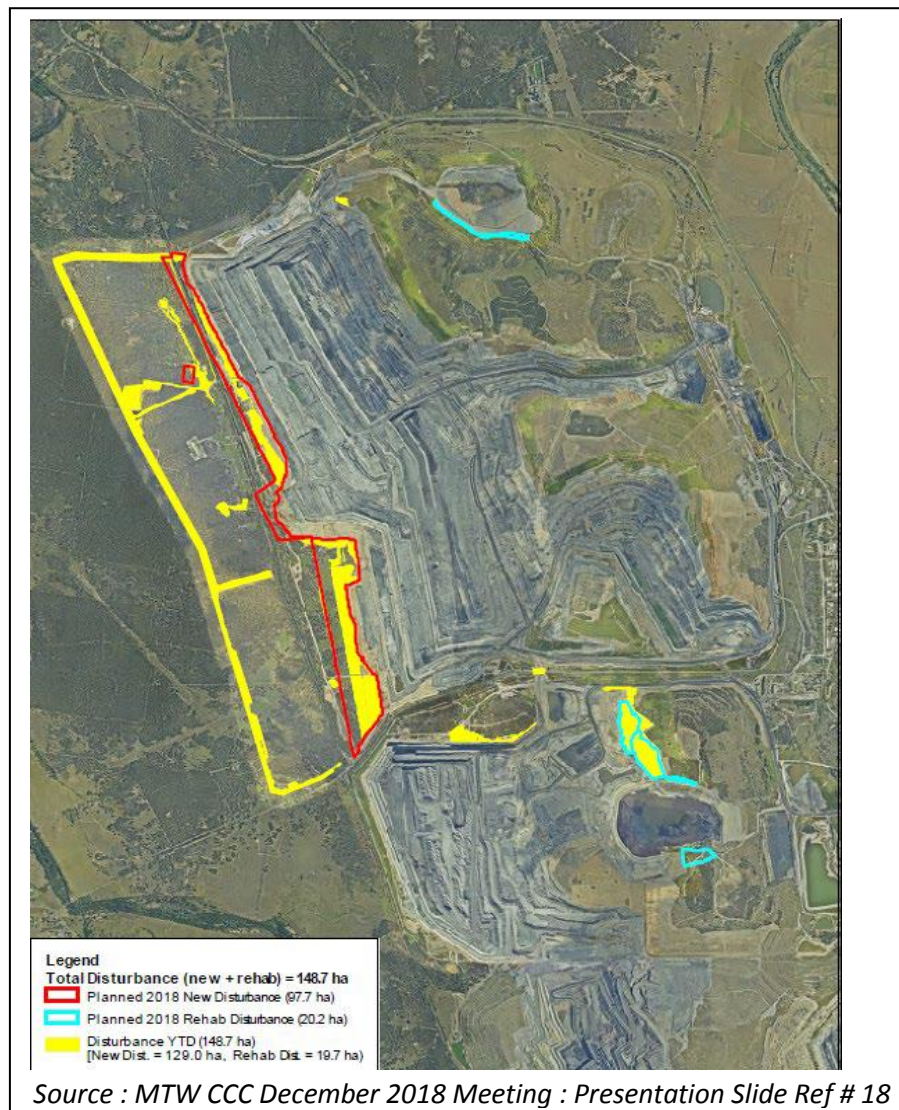


Hayley advised that MTW are tracking well towards their rehabilitation target of 100ha, with just over 50 hectares seeded to final rehab and with additional areas prepared for top soiling, shaping and seeding to close them out.

Disturbance

Stewart asked what the figures were for disturbance in 2018 and this was confirmed as being at 148.2 as of the end of September. Stewart asked if there was much more disturbance planned for the remainder of this year and Hayley advised there was to be some in the northern end of Warkworth i.e. in North Pit and that whilst most of that has already been disturbed and mulched it is now awaiting top soil stripping. Hayley felt this would be the only further disturbance anticipated for year end and that this may potentially go into January of next year.

Stewart noted the comparison of disturbance being 150ha against 100ha of rehabilitation so far and asked if 100ha remains MTW's target for this year. Hayley explained that the YTD disturbance is at 148.2ha, then planned disturbance for 2018 is 97ha, so that figure less the 50ha of rehab, gives the difference of 47ha.



Stewart feels that the disturbance areas gradually get bigger than rehabilitation and that MTW rarely meet rehabilitation targets, he feels this is a result of overestimating rehabilitation and underestimating disturbance, noting that has tended to be the case in the past but feels that current mapping does indicate that rehabilitation is way behind. Stewart is concerned about final rehabilitation being disturbed again and felt there were very few areas that MTW could say are not going to be touched again.

Stewart felt the expectation from some 20 years ago was for rehabilitation to keep up with disturbance, he feels that does not happen nowadays and this ratio is getting further behind. Looking back to the past Stewart noted also that disturbance tended to be around 50 to 100 metres ahead of excavation and this distance is now going towards 300 metres or more now, and that had appeared evident to him ahead of mining Saddle Ridge.

Stewart was not sure what the current rules were for disturbance ahead of mining but felt on the old scheme the effort of the mines was to attempt to rehabilitate as much as what was disturbed and reiterated his concern that these two ratios are getting further apart. Stewart noted also that the disturbed areas, including the Pit, that can be seen on mapping indicate to him that there are large areas open to dust generation and queried how that had come about.

Hayley explained that Mine Operations Plans (MOP's) govern what the company does and from a strategic point of view, 20 or so years on, MTW have got additional equipment, the pit is larger and there is a lot more involved and factored in such as; stock piling more top soil, preparation of areas are now done differently and water management is more of an issue creating the requirement for MTW to also disturb areas for the implementation of dams. Hayley confirmed the main disturbance over the past 12 months had been a result of stripping ahead of mining and for water management purposes. Hayley added also from a rehabilitation point of view, there had been factors limiting their use of high dumps i.e. windy and dry conditions, as a result of that MTW are now running out of low dump space, so they are working to get that space released as well to catch up with mining.

Hollie asked if areas that are disturbed are calculated and reported and Hayley confirmed yes. Hollie queried, as an example; if the company is looking for a target of 100ha of rehabilitation for this year but hypothetically then disturbed 50ha of that the following year, does the company still claim that the target of 100ha has been met. Hayley provided a scenario where the company had hit their rehabilitation target for the year but if, for example, 30 hectares of that rehabilitation was disturbed again, then that goes into MTW's negative and would be carried over to the following year. Hayley noted that this would have an impact on ratio issues, as disturbance versus rehabilitation would be out.

Hayley noted this is something the company battles with, she reiterated that MTW's approvals allow for higher dumps in certain areas but the company has not been able to get to that level due to GPS or other reasons, so they are now having to make the most of those levels and strategically dump those out according to their MOP and to what levels the company had indicated they would be at. Gary added that this subject is integral in terms of what MTW are doing in their mine planning space and confirmed that staff are acutely aware of what MTW's targets are and what needs to be done to try and get there. In relation to dehab and rehab MTW look at different measures of what is new rehabilitation and also total disturbance type metrics.

Col asked which Regulator monitors rehabilitation and disturbance and MTW advised that is the Division of Resources & Geoscience (DRG). MTW report on rehabilitation and disturbance against their Mine Operations Plan targets in their Annual Review and Gary confirmed that DRG representatives attend site and conduct annual inspections to look at how the company is progressing.

Gary advised that MTW is looking at a lot of second phase rehabilitation in their 2019 budget and working to get top soil on now to enable them to move into this next phase. Stewart asked if an area that has been seeded is considered the final step in rehabilitation and Hayley confirmed yes, this will have gone through composting and shaping, so that becomes classed as final rehabilitation i.e. there is a cover crop on there that has seeded and germinated.

Further activity is then driven by what the company want to grow, so first step is the cover crop i.e. more organic material than soil, then that may get flattened down in preparation for natives or whatever species the company has committed to plant and then becomes final stage i.e. Stage 2 is the final seeding. Hayley explained that final rehabilitation is classified as Stage 1 seeding, then this area becomes Stage 2 when planted out. Hayley also noted that MTW may seed over and over again in some areas depending on what the company want to grow.

Mixed Waste Compost

Gary advised that there has been a change to how the EPA considers mixed waste compost for rehabilitation and that the EPA have revoked the exemption from waste levy and asked all users to put this waste on hold until they are back in touch. Further detail regarding changes to this mixed waste exemption can be found on the EPA's website.

Gary advised that MTW had utilised this mixed waste compost extensively since 2012 and explained the issue for the company now is that they have several stock piles of the product in readiness for rehabilitation progression in 2018 and early 2019.

Gary explained the difference between waste products with Green Compost coming straight out of a green waste bin and Mixed Waste Compost being from green waste that is pulled out of a straight garbage bin. Hollee asked about the issues the EPA have with mixed waste compost and Gary responded that EPA points to some environmental and health concerns, along with some questioning over the benefits of using this product at the application rates that some apply the compost to their land as a result of some studies the EPA have conducted. Gary indicated that MTW would beg to differ on the benefits of use of compost, as we have seen good results with its use at MTW. Gary understands that the EPA want to mitigate any potential risk but MTW need to have that conversation with that department and put forward MTW's case around their use of Mixed Waste Compost going forward.

Wallaby Scrub Road gazetted closed 7 September 2018, and ownership transferred from Council to MTW.

- ✚ Council installed temporary barricades and new road signage on 7 September 2018 at north and south ends to cease public traffic to WSR.
- ✚ MTW has installed permanent security fence on the Putty Road end of WSR with permanent fencing planned for the northern access point and have created a recessed area to allow for large vehicle access.
- ✚ Historic Heritage Survey of WSR was completed in October; awaiting final report.
- ✚ Aboriginal Survey of WSR and salvage completed in October; awaiting final report.



Works going forward:-

- + Rural Fire Service tie-ins to Wallaby Scrub Road being progressed after completion of October Heritage and Cultural Heritage compliance works.
- + Water infrastructure construction including sediment basins and drains have commenced to manage water.
- + Demolition of old houses and waste clean-up completed with asbestos removed.
- + Aboriginal Heritage Salvage works have been completed for ahead of mining works.

Stewart queried if all of the houses were demolished as he felt there had been one in reasonable good condition and Hayley confirmed that the demolition had included all houses with some containing a fair amount of asbestos. Stewart felt that particular house may not have been built in the days of asbestos and it could have been salvaged and relocated.

MTW Operations - Business Papers

Business papers provided to CCC prior to meeting. Includes summary of:

- + Complaints, Incidents, Environmental Monitoring, Rehabilitation, Website Uploads, Community Investment Update

Committee was asked for any comment on the Business Papers. Stewart queried rehabilitation progress/disturbance. Details on discussions on this item are provided with "Rehabilitation - Disturbance" in these MTW CCC minutes above.

Regulator / Agency Engagement

Environmental Management Plans – several have been updated and approved (24 August/20 September 2018) with updated versions uploaded to MTW Website:-

- ✓ Environmental Management Strategy
- ✓ Biodiversity Management Plan
- ✓ Noise & Vibration Management Plan
- ✓ Air Quality Management Plan
- ✓ Blast Management Plan
- ✓ Water Management Plan

Gary advised that MTW are in the process of updating some Management Plans and explained there were a lot to be completed after the separation from HVO, including the removal of references to a combined operation.

Independent Environmental Audit Report has been approved by DP&E 24 August 2018 and uploaded to MTW website.

Gary advised there is requirement to provide detail on this Audit to the CCC and confirmed this was circulated to members on 12 November 2018 in hard copy, in addition this IEA Report is available on the MTW website <http://insite.yancoal.com.au/> Gary noted included in this Audit are the company's responses to any non-compliances.

Annual Review Report has been approved by DP&E 25 September 2018 (Already on MTW website).

Environmental Protection Authority (EPA) – Annual inspection of licensed Warkworth premises on 9 November 2018.

Gary advised that the EPA had come out for an annual inspection to each of their licensed premises and this yearly inspection is separate from other regulatory inspections related to compliance. MTW conducted a tour around their premises for the EPA to view; general look outs, some dams and water management, west of Wallaby Scrub Road and MTW's main discharge point. Gary felt that it had been a good visit and that the EPA will come back to the company with any comments for them to respond to if necessary.

8. OTHER AGENDA ITEMS

Hayley noted that no other agenda items were received / agreed for this meeting.

9. GENERAL BUSINESS

MTW provided the following general business items.

COMMUNITY RELATIONS UPDATE

Near Neighbour Amenity Resource

44 receiving properties for 2018 in the company's under sink filter installation programme

Community Investment

MTW site donations committee has continued strongly in 2018; this detail is also available on Yancoal's website

Recipients included:	<i>Bulga Rural Fire Services - CCTV installation at Station</i>
<i>Singleton Business Chamber - 2018 Outstanding Business Awards</i>	<i>Milbrodale Public School - Family Fun day</i>
<i>Singleton Business Chamber - 2018 Hunter Coal Festival</i>	<i>Broke Public School - K-6 Robotics Program</i>
<i>Newcastle Combine Schools - 2018 Combined Schools Anzac Service</i>	<i>Merriwa Rotary Club - Bugger the Drought fundraising picnic day</i>
<i>Wildlife Aid</i>	<i>Country Women's Association (CWA) - CWA Friendship Day at Baiame Cave</i>
<i>Singleton Golf Lady Members - 2018 Annual Open Golf Day</i>	<i>Singleton Neighbourhood Centre - Breakfast Program (12 months)</i>
<i>Wanaruah Local Aboriginal Land Council - Naidoc Week</i>	<i>Witmore Enterprises Inc - Diamond Dance Event 60 years celebration</i>
<i>Singleton Theatrical Society - 2018 Production of 'Mary Poppins'</i>	<i>NSW Cancer Council - Transport for Treatment</i>
<i>Rotary Club of Singleton on Hunter - Singleton Art Prize</i>	<i>Singleton Council - Pass the Hat Drought relief Fundraiser</i>
<i>Mindaribba Warriors - Gold Sponsor (Rugby League)</i>	<i>Singleton Women's Bowling Club - 2018 Kookaburra Carnival</i>

Singleton Agricultural Show

The 2018 Glencore Singleton Show and Campdraft:

- 11,000 people through the gates
- 2,000 exhibit entries
- Record takings for stall holders

Science & Engineering Challenge

- Science and Engineering Challenge is the winner of the 2018 Business and Higher Education Round Table (<https://www.bhert.com/bhert-awards>) award in the 'Outstanding Collaboration in Community Engagement' category.



Source : MTW CCC December 2018 Meeting : Presentation Slide Ref # 27

Travis advised that Yancoal had sponsored this event in the Hunter where they gather primary and high school students together to run through science and engineering and was pleased to announced that Yancoal had won the prestigious national award for "Outstanding Collaboration in Community Engagement", as a result of collaboration between industry and higher education students. Gary added that this award was really well received by the company as it was not just for a financial sponsorship, with MTW technical and E&C staff attending to support students in their activities.

Community Investment Space

Travis advised that MTW will put out more investment programs with new approaches and as more multi-year type programs that will be a bit of a hybrid based on Site Donations and the previous Community Development Fund.

Travis noted that he had spent time talking to schools and to both primary and more mature students about longer terms programs that Yancoal may be able to provide investment assistance for. Travis was concerned when looking at Schools that a number one issue identified was around mental health, so the company are hoping to develop some programs with schools to help address these concerns. Hollee felt that bullying had come up as a big issue for children and Travis added that there also seems to be some real concern around young people having difficulties dealing with social media.

GENERAL BUSINESS FROM CCC MEMBERS

HOLLEE JENKINS

Hollee noted that air quality alerts had gone out regarding exceedances on the 7th and 8th of November. Hayley confirmed that these had been a general EPA alert and that MTW had responded to both the Department and EPA on different issues and concerns over dust. MTW had been questioned on what the company had done on these dusty days to alleviate their potential contribution. Hayley advised this had been a region wide event and there had been monitoring going off up and downstream of MTW's operations, as well as other areas not close to the mines.

Gary added that as a result of this dusty period the Department had conducted an inspection and provided their feedback on what the company was doing. Gary confirmed that the Department has requested for MTW to provide detail on what they were doing on that dusty day, and also in response to community complaints, he anticipated that report will go to the Department on 13 November, 2018.

Hayley advised the CCC that should they receive questions from community on specific days and/or if this was of interest to members, that MTW's website InSite is where detail can be found around operational changes that have been undertaken by MTW in response to conditions.

STEWART MITCHELL

Depositional Dust; Reference : Business Papers : Page 6 : 2.2 Depositional Dust
Figure 4: Depositional Dust - July 2018 - Refer to Monitor D122

Stewart advised there had been an ongoing problem for many years, where exceedances in monitoring results had been related to the presence of insects and bird droppings, particularly in relation to monitor D122, noting that MTW is then entitled to discard / exclude those results from the annual average calculations.

Stewart felt that this Monitor D122 continues to be the offending one and that it was a waste of time having this monitoring in its current location if it is to continue to have those problems, he felt it should be either relocated or its data be excluded from calculations.

Stewart noted that that there had been some lower readings at D122 in September and it did not appear there had been an exceedances then, so he wondered if MTW had realised that this monitor was not doing its job and if it had been relocated. Hayley advised that D122 had not been relocated and the company had raised their concerns with the Department that this type of monitoring may not be determining an accurate measure for dust.

Hayley noted that this monitoring has now been removed from MTW's Environmental Protection Licence (EPL) and that the company has High Volume Air Samplers (HVAS) that essentially do the same measuring job and that they run in a depositional type manner for a 24 hour period. MTW would like to have these Depositional Dust Monitors removed from their Licence or moved to a different location but the Department has a preference to keeping them in place.

Stewart gave the example of monitoring that had once been installed next to a dairy farms cattle yards that was overflowing and that no one had wanted this shifted, even though it was clearly not a true representation of depositional dust due to its location and therefore did not provide accurate readings.

Stewart noted that in the past, the long term impact assessment criteria was maximum 4 grams per square meter (4.0 g/m^2) with 2 g/m^2 of those being atmospheric i.e. something else was a contributor, so mines were only allowed to go up to 2 grams over the background dust level. Stewart felt this may be a bit hard to achieve these days and asked if Hayley was talking about a new system of measuring dust.

Hayley responded that she was talking about their High Volume Air Samplers that they use concurrently alongside numerous monitoring devices that all measure dust in a different way i.e. Dust Tracks, High Volume Air Samplers for PM_{10} results and TEOM's for real time PM_{10} . Hayley explained also that the location of monitoring is often pin pointed by a directive from the EPA or the Department as to where they say it needs to go, based on downwind and upwind sensitive receptors. Hayley added that for MTW to change where monitoring is located, they must seek approval from the Department.

Stewart feels that individual monitoring doesn't address the real problem being the contribution from all mines and the cumulative effect. Current monitoring might allow MTW to go to their maximum, and the next neighbouring mine and so on. Stewart felt if all the data was combined from one end, the results would be way over the limit.

Hayley noted that the EPA fall back on the company's EIS around impact statements and cumulative totals, she noted that this EIS is quite recent so from that perspective MTW are one of the mines that are measured against cumulative impacts, as that falls back on their cumulative impact study.

Yancoal's Company Structure

Stewart asked if MTW could provide a brief outline on Yancoal and where everyone sits now. Gary advised that in terms of Yancoal as a business, the Head Office is located in Sydney where there is an Australian based CEO; Reinhold Schmidt and Management Team.

Gary advised that he had commenced working with Yancoal in 2009 and provided the following detail in terms of coal mines and where Yancoal operates in the coal industry:-

- ❖ **Ashton**; Singleton
- ❖ **Austar**; west of Cessnock
- ❖ **Cameby Downs**; northwest of Brisbane in the Surat Basin
- ❖ **Abel Mine**; Donaldson
- ❖ **Hunter Valley Operations**; Jerry's Plains
- ❖ **Middlemount**; Queensland Bowen Basin
- ❖ **Yarabee**; Central Queensland - Bowen Basin
- ❖ **Moolarben**; Western Coalfields of N.S.W.
- ❖ **Mount Thorley Warkworth**
- ❖ **Stratford Duralie**; Gloucester Basin
- ❖ **Premier**; in Collie - Western Australia.

Stewart asked if each Yancoal Mine has its own General Manager and Gary advised there is a Group General Manager for underground mines, as there are only a couple, and a Chief Operating Officer looking after open cut, General Managers then report through this Chief Operating Officer to the CEO.

Gary explained there is a bit of a matrix with MTW Environment & Community (E&C) reporting to the E&C Corporate Team and this is similar for Human Resources (HR), Finance and Health & Safety. Gary confirmed that the staff here all report through Jason but also receive some additional support from the E&C Corporate Team. Gary advised that when MTW hold their Community Meeting their intent will be to talk openly about Yancoal's Structure and the company's longevity in the mining industry.

Stewart noted that Yancoal were also in the Hotelier business now and Gary responded that the company hopes the Bulga Tavern goes well, he felt that it was looking great inside and hopes that this will be a good surprise for patrons. Gary noted that the people running the Tavern are very passionate about getting this business going and that Yancoal were very pleased with their efforts.

Mount Thorley

Stewart noted that the company is still doing work in Mount Thorley open cut and asked if the area up near the Putty Road end was nearing completion. Gary confirmed that MTW has been topsoiling that area in preparation for seeding as part of their goal for 100ha of rehabilitation and to provide some micro-relief. Stewart asked if the plan was for the same style as what was done at the boundary of Bulga Coal and Hayley confirmed that is correct and that there is some rehab to be cleaned up on the Putty Road side. Gary added when this area is tidied up and MTW finish coaling next year, then the Mount Thorley's Consent permits the company to construct a Tailings Facility in that area and this construction is likely to commence in 2019.

Exploration Work

Stewart noted there had been some rumours circulating that Yancoal may be looking at a long wall underground mine in Mount Thorley and asked if there is any truth in that. Gary responded that the company is doing exploration activities to explore the resource that is deeper and are looking for any particular opportunities where MTW could exploit the resource that may be there. Subsequent to this, the company would have to apply for that and go through a different process. Gary advised the first step is exploration to understand the resource, so that is what they are currently undertaking with their exploration program.

Stewart noted that Rio Tinto had spend \$16Million doing exploration work that he believed was for underground mining, he was not sure exactly where that was but felt most likely the bulk of it would have been in Warkworth and not so much on the Mount Thorley side. Gary explained the exploration work has the same purpose, they are just getting some slightly different information and looking deeper than they can open cut mine the resource. Some of the other magnetic and seismic work is to understand structures and the like, along with the resource. Stewart asked if that was to proceed would MTW have to keep part of Lodgers Pit open for access and Gary responded that the company would have to assess where any infra-structure could be located, and reiterated the company are only at the very first stage of answering the question of; is there a resource there that can be mined.

Hollee asked with regard to Wallaby Scrub Road, if there was test drilling being conducted in the road reserve and MTW advised no, that is on the western side of mine property. Hollee queried if the exploration was being conducted just in Warkworth and Gary responded that MTW can only explore in their Lease areas, and within the Exploration Licence and these are exactly where the company's lease boundaries are as of now and that is what they are doing.

Hollee asked what is the allowable depth for Warkworth and Gary advised this differs for different leases with some being unlimited and others to 900 metres, he felt the depth was unlimited on the Warkworth side but would have to check this for Hollee.

Wallaby Scrub Road

Stewart asked with reference to Wallaby Scrub Road, that the company had said the road has been Gazetted and queried if that means Yancoal now own this road in its entirety. Gary advised that the company owns the whole of the Council section and that on the same day the Road was Gazetted, the transfer of that land came to Mount Thorley Warkworth. Stewart queried if that means the company now holds the Deeds for Wallaby Scrub Road and Gary confirmed that is the case. Stewart asked if that means the road is entirely Mount Thorley's and no longer a public road and Gary explained when the Road was closed on the 7th of September by the Minister for Crown Lands, Council transferred the Title via a Settlement Property transfer on the same day.

Stewart asked if there was any update on the Aboriginal Lands Claims on the Crown Land Roads that run off Wallaby Scrub Road. Gary believed there may be potential for claims on those Crown lands so the company is going through the process with Crown Lands people with regard to MTW being able to mine those, he confirmed there is a process that is in place and is known to that Department. Stewart felt the correct process would have been to establish if there is a valid Aboriginal Land Claim, noting that this would have to go before a Court and Gary responded that the Crown Lands people are dealing with that and confirmed that MTW do not own that land but have applied to mine it.

Stewart felt that Legislation would allow Aboriginal people to get the first say on this land, depending on what it had been used for previously i.e. whether it was continuing use for some purpose or if it was just vacant Crown Land. Gary advised that the company has been in discussion with Crown Lands for many years about these and other Crown roads in the area and that these all fall into the same basket.

Community Heritage Advisory Group (CHAG)

Stewart advised that he had previous discussions with Travis about the CHAG and the need to reconvene a meeting, primarily to discuss the outcome of a report on Wallaby Scrub Road which he feels is part of the role of the CHAG.

Travis advised that he had not received this report to date and that the intent is to have a CHAG Meeting once that comes in. Stewart noted that there was some special funding to come to Bulga from the Historic Management Fund, he didn't know where that stands but hoped to be able to report on that at the next CHAG Meeting. Gary asked if that was a conservation fund separate to the VPA and Travis confirmed, yes that it is purely for Historic management and administered by Council.

Property Portfolio

Stewart noted that detail around property acquisition would no longer be recorded in the Business Papers and Gary confirmed that providing a property list on a quarterly basis was not something MTW should be provide publicly, but they are happy to continue discussions in this forum should something be triggered though an acquisition on request process.

Hayley added that advice had come from the company's Land & Property people that some residents had asked for MTW to not do this reporting, so this did not really come from an operations perspective, but rather feedback to the company that this information belonged to the vendors and it was up to those individuals whether they chose to share detail of if they had sold or not.

Stewart queried confidentiality clauses that may be attached to sales and if these would disallow the vendor to speak about them, he also asked if neighbouring properties would be notified of a sale. Gary advised he did not think that notification of neighbours is a requirement when properties are bought and sold. Hollee advised advice would only come to neighbours if there was a change, such as a Development Application, and there would not be that requirement in relation to buying and selling.

Christina asked for confirmation that residents that had sold their homes to the mine had asked for that not to be disclosed and Hayley confirmed that some people had expressed their preference for MTW not to. In addition, it would certainly be the case for the company not to disclose detail if there was a confidentiality agreement in place. Hayley added that residents had felt it was not up to the company to share this information but up to themselves if they wanted to disclose this detail and Christina felt that was a fair call.

Social Impact Management Plan (SIMP)

Stewart asked about the status of the SIMP and Gary advised that Travis has had that plan prepared for some time and he is to finalise this, Gary's goal is to have this completed before the Community Meeting. Stewart felt that MTW were supposed to consult with the CCC on the SIMP and it was not for the company to sit on something like that. Gary advised that Travis had made him very aware of that feedback and he assured members that the plan should be available prior to the next CCC, so could be discussed in that forum as well.

Road Closures for Blasting

Stewart is concerned that the system for road closures for blasting that MTW are currently employing is not working, with temporary 60km speed zones put up at least half an hour before the blast period. Stewart had noticed that if the blast is put back by an hour to two hours that the 60km speed limit remains in force for 7 Kms, when there is nothing on the road. Stewart feels the signage should state that it is a "Mine Blasting Road Closure" and that the wording "Road Works" is misleading, as there are no actual road works being conducted. Stewart feels the speed limits are an inconvenience for the local community and also quite a nuisance for a lot of traffic that uses the Putty Road to travel up from Sydney. Stewart would ask that those 60km signs only get put in place when the company knows the blast is going to go ahead.

Hayley confirmed that is what the company aims to do and that she has had conversation with the people that put the signage in place and that they were covering signs over until there was a requirement to shut the road, and if this was not happening then MTW would need to look into that.

Adrian concurred that there are so many speed limits in force nowadays and that the RMS is the same, he felt that having to reduce speed to 40km around 4.00 p.m. of an afternoon is unreasonable. Adrian felt this type of issue becomes a matter of credibility for the company and Stewart agreed that the local community were getting a bit tired of mines slowing people down for extended hours on roads that are normally 100km.

ACTION 1: In relation to road closures for blasting, Gary to check that the people who put the signage in place understand that these signs are to be made visible when the blast time is confirmed and that alternately this signage should be covered over.

Rural Fire Services Track

In response to concern regarding the location of access to this fire trail and that this could potentially hold Fire services up, Gary confirmed that there was still access through there. Gary advised that Council had put in bollards as a temporary measure but Council will put in a fence as part of that whole purchase and he anticipated that would be completed within a few weeks. Gary confirmed also that the RFS had met with the company to establish a protocol where there could be access to get through and when Council complete this fencing the bollards would be moved out of the way. Hayley added that the recessed gateway was also for the safety of trucks that need to go into that area.

Stewart noted that it appeared MTW had been setting up for a blast on the top of Saddle Ridge, he queried when that may be going to happen as he has been looking at that hill from his residence for many years and would like to know this detail so he can see what happens when it disappears. Hayley confirmed that blast was scheduled for Thursday or Friday of this week.

Col asked if Christina had any further community feedback and she confirmed that Stewart had covered off on all of her areas of interest at today's meeting.

Singleton Council CCC Representative

Hollee advised of Singleton Councils decision that she remain the representative for both the MTW and HVO CCC's and that duration is to September 2020. Members said that was excellent news and were very happy that Hollee was staying on board with the CCC.

Hayley Frazer – sabbatical leave

Hayley advised that she was going on sabbatical leave at the end of November, she thanked the CCC for a good year in 2018 and for helping to coach her into her role as CCC Secretary. Hayley was appreciative of member feedback and support, and both personally and on behalf of the business, thanked the group for their contributions at this forum and wished everyone all the best going into the end of this year, along with a happy and safe Christmas & New Year.

Col thanked Hayley on behalf of the CCC for not only her valuable contribution at the Meetings but also for the smooth running of the MTW CCC. Members joined Col with warm words of appreciation and the group agreed that Hayley will be very much missed whilst on leave.

10. NEXT MEETING

Next Meeting; 11 February 2019 : 2.00 to 3.30 p.m. at MTW Boardroom

ACTIONS ARISING FROM THIS MEETING

Action	Page	Description
1	12	In relation to road closures for blasting, Gary to check that the people who put the signage in place understand that these signs are to be made visible when the blast time is confirmed and that alternately this signage should be covered over.